

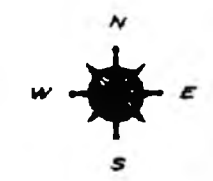
LEGEND

- COUNTY LINE
- CORPORATE LIMITS
- STATE TRUNKLINE
- COUNTY PRIMARY
- COUNTY LOCAL
- ADJACENT COUNTY
- CITY OR VILLAGE STREET

PRIMARY ROAD SYSTEM IS 7.64 MILES  
 LOCAL ROAD SYSTEM IS 51.69 MILES

I HEREBY CERTIFY THAT THE ROADS SHOWN HEREON BY SYMBOL OR IN RED AS PRIMARY ROADS AND THOSE SHOWN HEREON BY SYMBOL OR IN GREEN AS LOCAL ROADS ARE IN USE AND ARE UNDER THE JURISDICTION OF THE COUNTY ROAD COMMISSION.

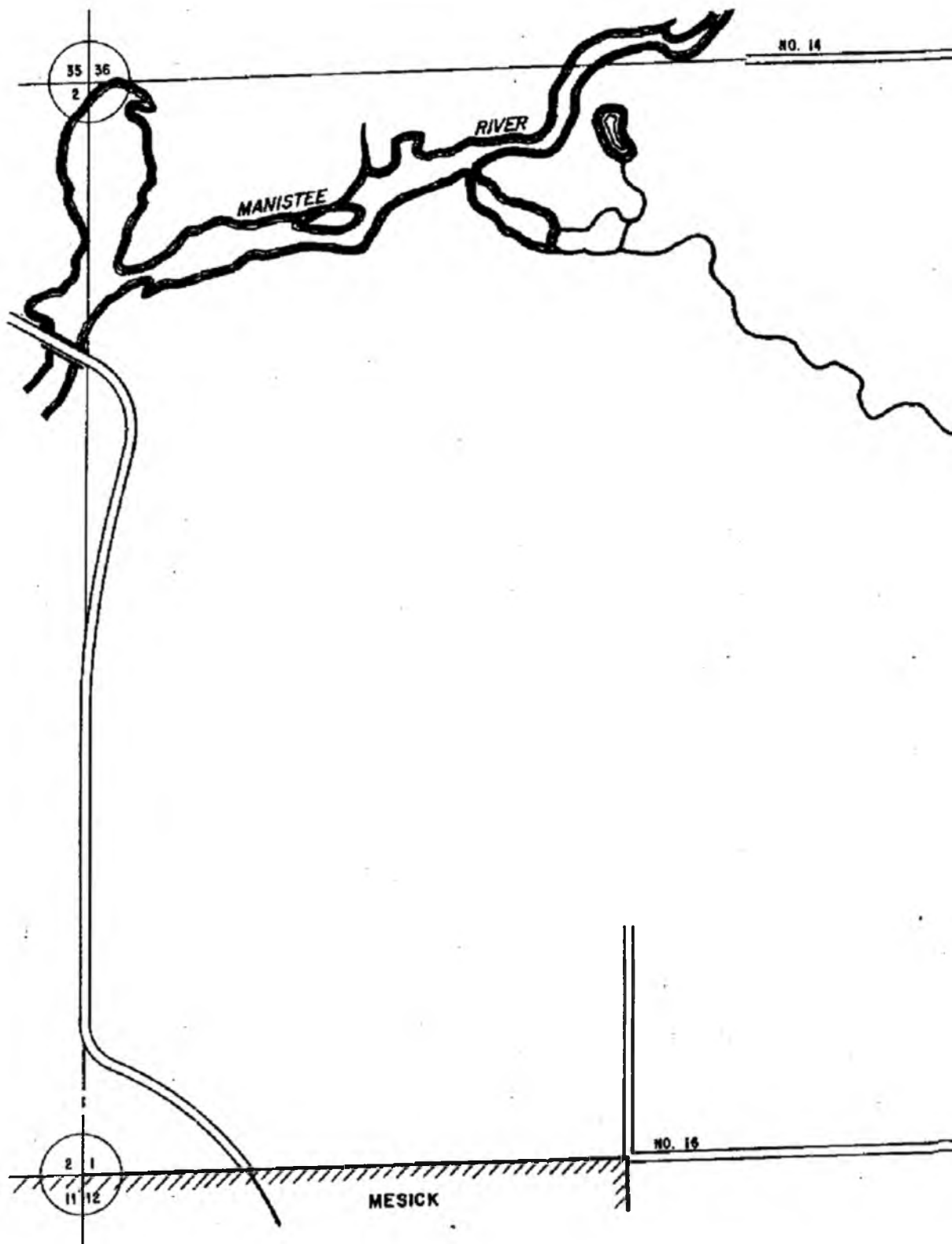
CHAIRMAN \_\_\_\_\_ DATE 1996  
 REV. 2, 1998

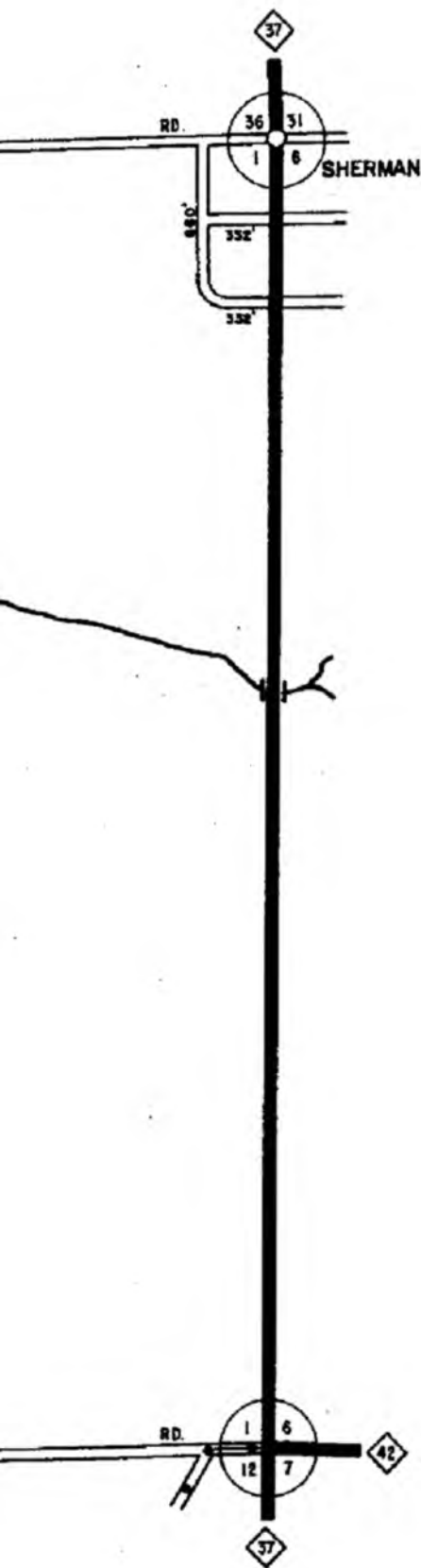


SCALE 0 1 MILE  
 One Inch Equals 3000 Ft.

SPRINGVILLE TWP.  
 T 23 N - R 12 W  
 WEXFORD COUNTY

13	14	15	16
	10	11	12
5	6	7	8
1	2	3	4





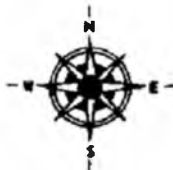
LEGEND

- COUNTY LINE
- CORPORATE LIMITS
- STATE TRUNKLINE
- COUNTY PRIMARY
- COUNTY LOCAL
- ADJACENT COUNTY
- CITY OR VILLAGE STREET

TOTAL FEET 1324 EQUALS 0.25 MILES

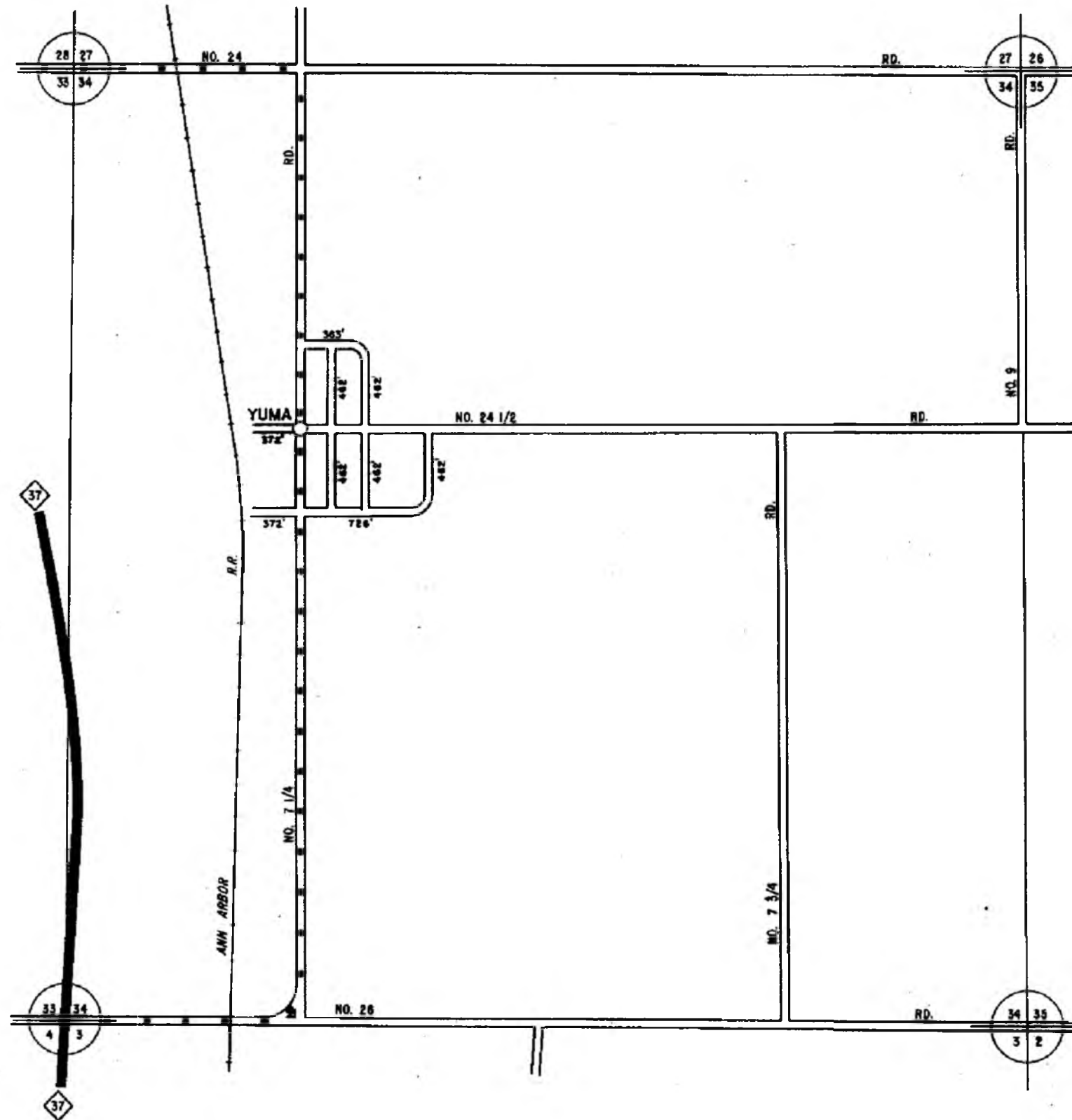
I HEREBY CERTIFY THAT THE ROADS SHOWN HEREON BY SYMBOL OR IN GREEN AS LOCAL ROADS ARE IN USE AND ARE UNDER THE JURISDICTION OF THE COUNTY ROAD COMMISSION.

\_\_\_\_\_  
CHAIRMAN      1962  
DATE



SCALE 0      600      1200 FEET  
  
One inch equals 600 feet

\_\_\_\_\_  
TOWNSHIP SPRINGVILLE  
SECTION 1      T. 23 N      R. 12 W  
COUNTY WEXFORD



LEGEND

COUNTY LINE

CORPORATE LIMITS

STATE TRUNKLINE

COUNTY PRIMARY

COUNTY LOCAL

ADJACENT COUNTY

CITY OR VILLAGE STREET

TOTAL FEET ~~4143~~ EQUALS 0.78 MILES

I HEREBY CERTIFY THAT THE ROADS SHOWN HEREON BY SYMBOL OR IN GREEN AS LOCAL ROADS ARE IN USE AND ARE UNDER THE JURISDICTION OF THE COUNTY ROAD COMMISSION.

CHAIRMAN 1990 DATE

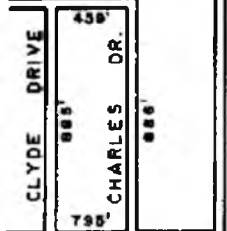


SCALE 0 600 1200 FEET  
One inch equals 600 feet

TOWNSHIP SPRINGVILLE  
SECTION 34 T. 23 N R. 12 W  
COUNTY WEXFORD

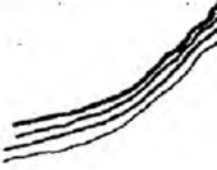
7 8  
18 17

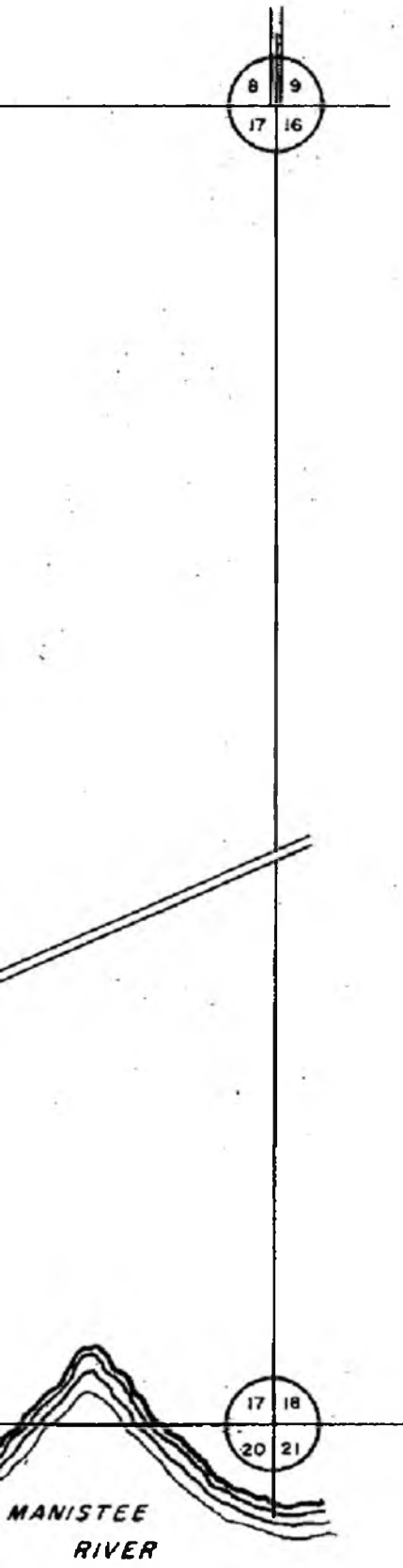
IRIS LANE



FREEMAN ROAD

18 17  
19 20





LEGEND

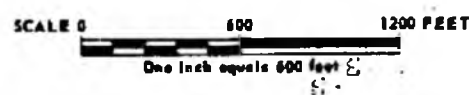
- COUNTY LINE
- CORPORATE LIMITS
- STATE TRUNKLINE
- COUNTY PRIMARY
- COUNTY LOCAL
- ADJACENT COUNTY
- CITY OR VILLAGE
- STREET

TOTAL FEET 9025 EQUALS 0.57 MILES

I HEREBY CERTIFY THAT THE ROADS SHOWN HEREON BY SYMBOL OR IN GREEN AS LOCAL ROADS ARE IN USE AND ARE UNDER THE JURISDICTION OF THE COUNTY ROAD COMMISSION.

\_\_\_\_\_  
CHAIRMAN                      1998  
DATE

REV 2, 1998



TOWNSHIP SPRINGVILLE  
SECTION 17 T. 23 N. R. 12 W  
COUNTY WEXFORD