

LEGEND

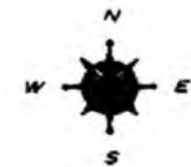
- COUNTY LINE
- CORPORATE LIMITS
- STATE TRUNKLINE
- COUNTY PRIMARY
- COUNTY LOCAL
- AJACENT COUNTY
- CITY OR VILLAGE STREET

PRIMARY ROAD SYSTEM IS 22.72 MILES

LOCAL ROAD SYSTEM IS 39.06 MILES

I HEREBY CERTIFY THAT THE ROADS SHOWN HEREON BY SYMBOL OR IN RED AS PRIMARY ROADS AND THOSE SHOWN HEREON BY SYMBOL OR IN GREEN AS LOCAL ROADS ARE IN USE AND ARE UNDER THE JURISDICTION OF THE COUNTY ROAD COMMISSION.

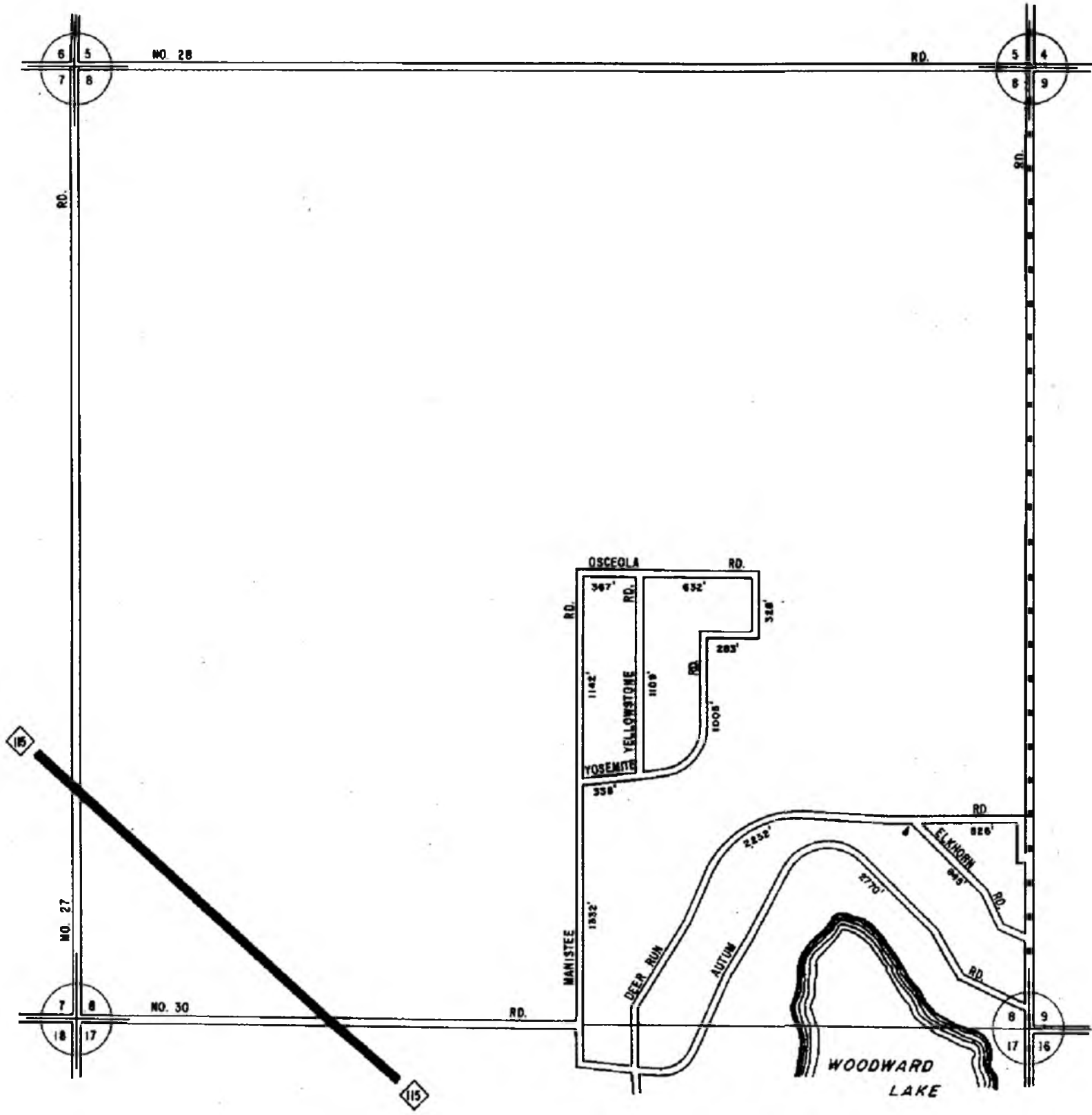
CHAIRMAN _____ DATE 1998
 Rev. (1980)
 " (1986)
 REV. 1994



SCALE 0 1 MILE
 One Inch Equals 3000 Ft.

SELMA TWP.
 T 22 N - R 10 W
 WEXFORD COUNTY

13	14	15	16
9	10	11	12
5	6	7	8
1	2	3	4



LEGEND

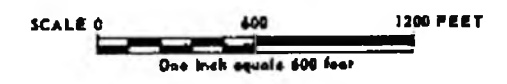
COUNTY LINE	-----
CORPORATE LIMITS	-----
STATE TRUNKLINE	=====
COUNTY PRIMARY	-----
COUNTY LOCAL	-----
ADJACENT COUNTY	-----
CITY OR VILLAGE STREET	-----

TOTAL FEET ~~1229~~ EQUALS ~~2.52~~ MILES

I HEREBY CERTIFY THAT THE ROADS SHOWN HEREON BY SYMBOL OR IN GREEN AS LOCAL ROADS ARE IN USE AND ARE UNDER THE JURISDICTION OF THE COUNTY ROAD COMMISSION.

CHAIRMAN

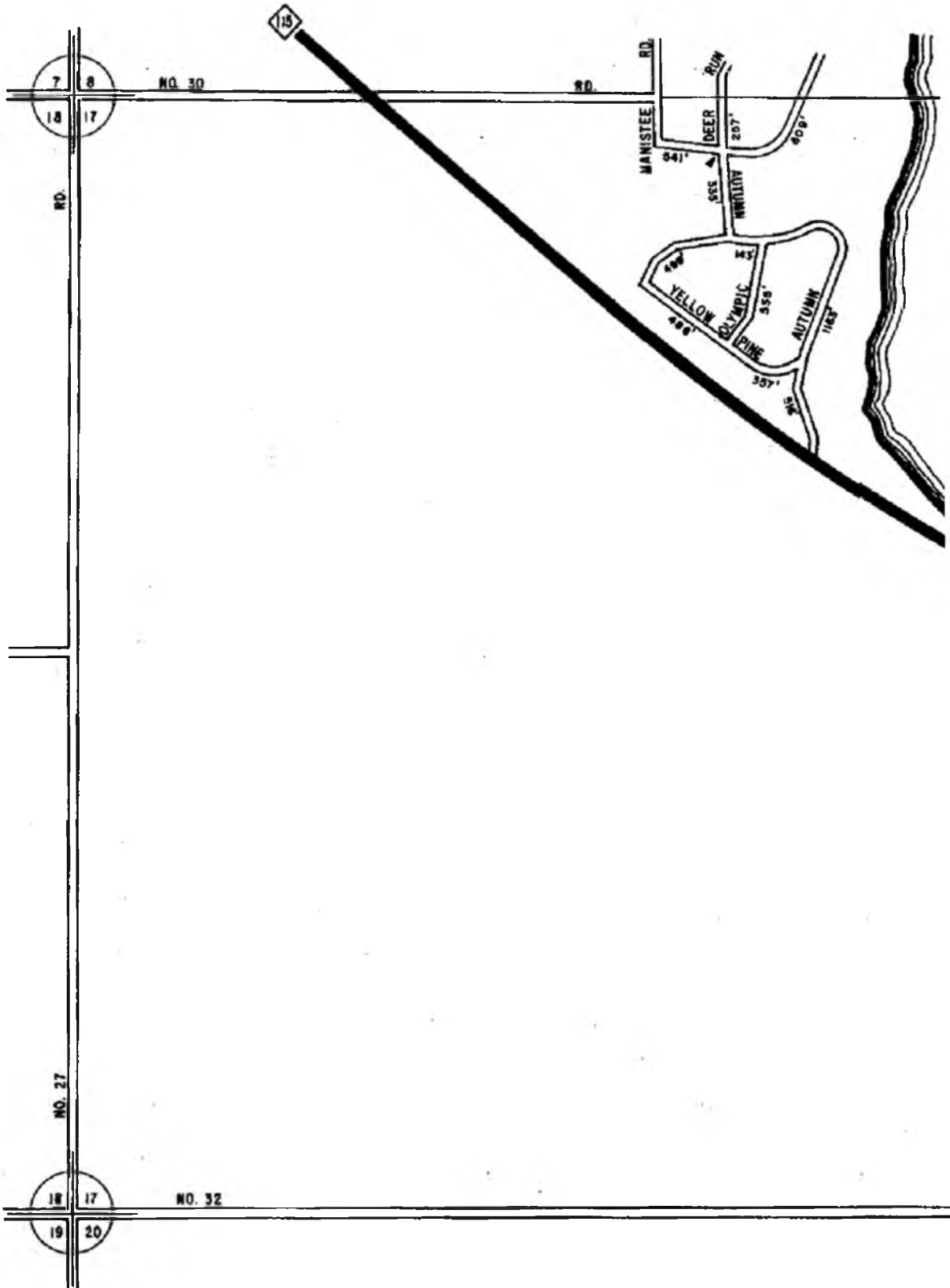
DATE

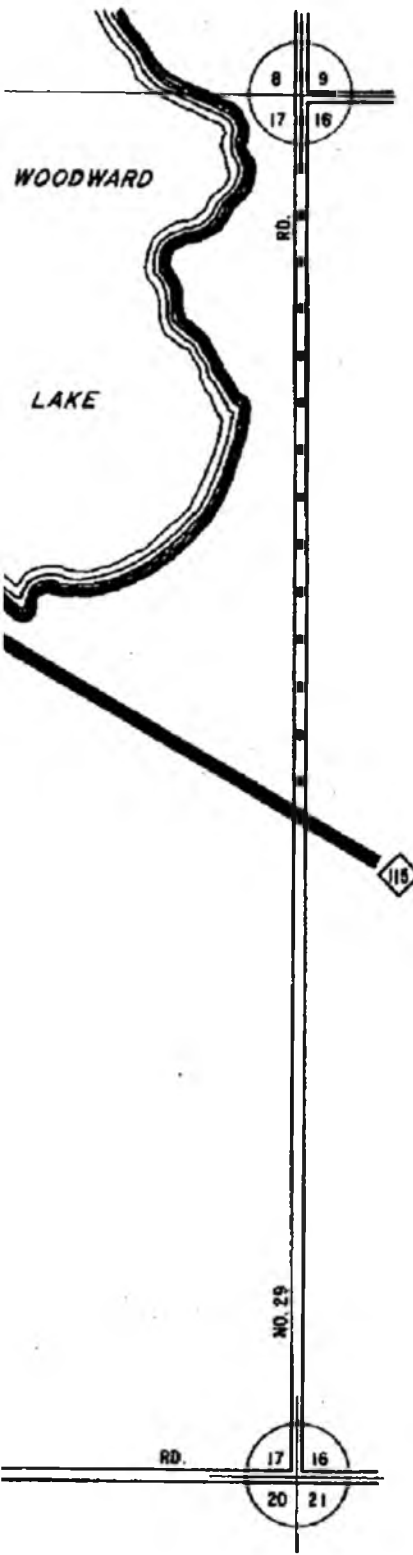


TOWNSHIP SELMA

SECTION 8 T. 22 N R. 10 W

COUNTY WEXFORD





LEGEND

COUNTY LINE

CORPORATE LIMITS

STATE TRUNKLINE

COUNTY PRIMARY

COUNTY LOCAL

ADJACENT COUNTY

CITY OR VILLAGE STREET

TOTAL FEET 5441 EQUALS 103 MILES

I HEREBY CERTIFY THAT THE ROADS SHOWN HEREON BY SYMBOL OR IN GREEN AS LOCAL ROADS ARE IN USE AND ARE UNDER THE JURISDICTION OF THE COUNTY ROAD COMMISSION.

CHAIRMAN _____ DATE 1993



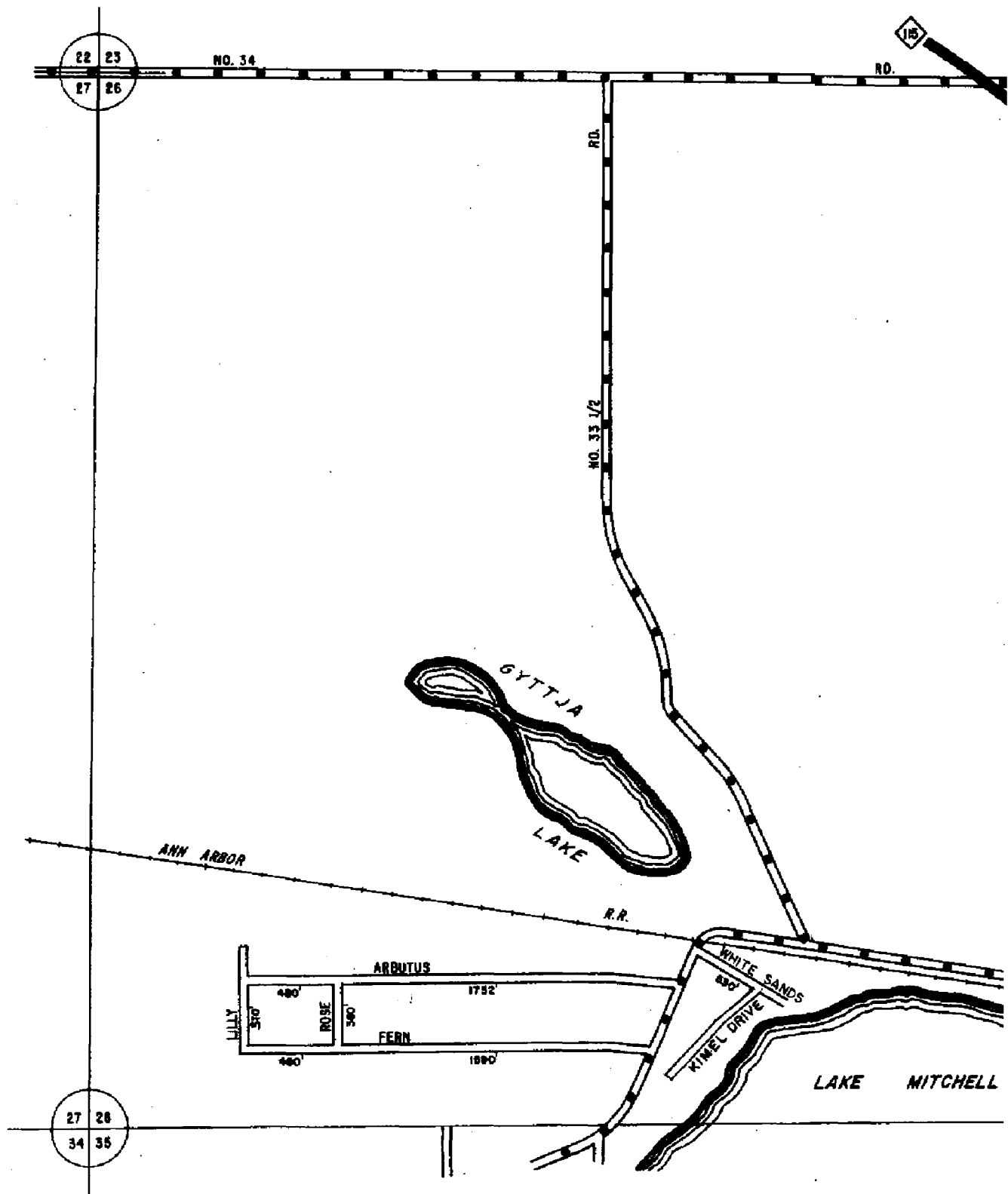
SCALE 0 600 1200 FEET

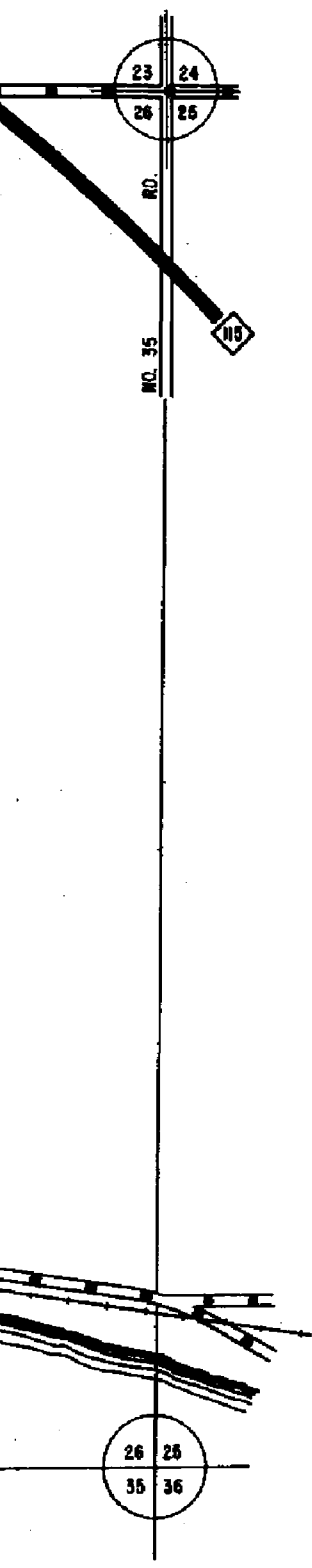
One inch equals 600 feet

TOWNSHIP SELMA

SECTION 17 T. 22 N R. 10 W

COUNTY WEXFORD





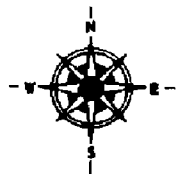
LEGEND

- COUNTY LINE _____
- CORPORATE LIMITS _____
- STATE TRUNKLINE _____
- COUNTY PRIMARY _____
- COUNTY LOCAL _____
- ADJACENT COUNTY _____
- CITY OR VILLAGE _____
- STREET _____

TOTAL FEET 6345 EQUALS 1.20 MILES

I HEREBY CERTIFY THAT THE ROADS SHOWN HEREON BY SYMBOL OR IN GREEN AS LOCAL ROADS ARE IN USE AND ARE UNDER THE JURISDICTION OF THE COUNTY ROAD COMMISSION.

CHAIRMAN 1998
DATE
REV. (1996)

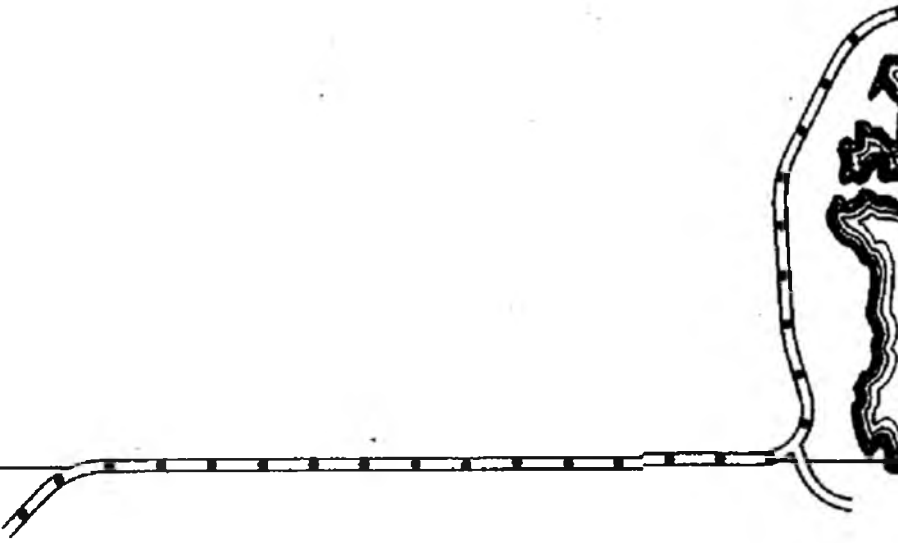


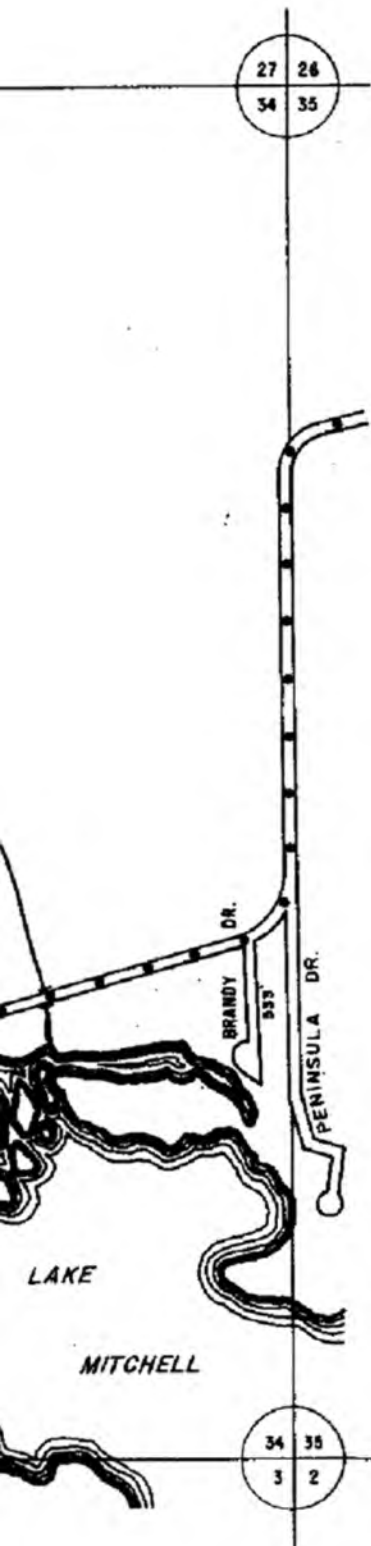
TOWNSHIP SELMA
SECTION 26 T. 22 N R. 10 W
COUNTY WEXFORD

28 27
33 34

BRANDY
BROOK

33 34
4 3



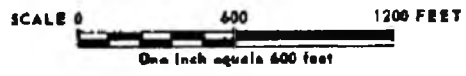
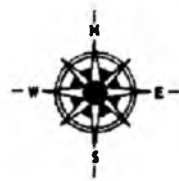


- LEGEND**
- COUNTY LINE
 - CORPORATE LIMITS
 - STATE TRUNKLINE
 - COUNTY PRIMARY
 - COUNTY LOCAL
 - ADJACENT COUNTY
 - CITY OR VILLAGE STREET

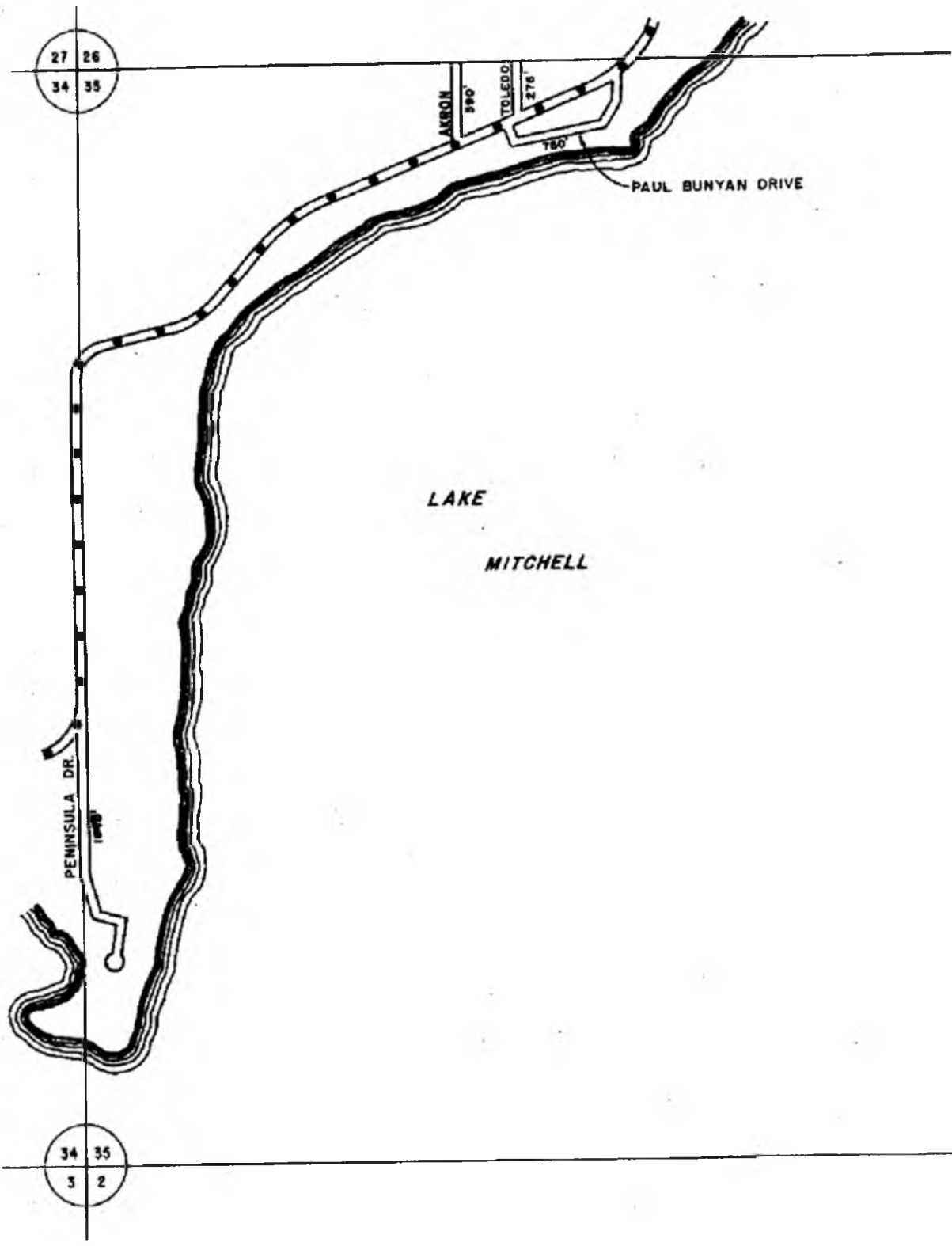
TOTAL FEET 533' EQUALS 0.10 MILES

I HEREBY CERTIFY THAT THE ROADS SHOWN HEREON BY SYMBOL OR IN GREEN AS LOCAL ROADS ARE IN USE AND ARE UNDER THE JURISDICTION OF THE COUNTY ROAD COMMISSION.

CHAIRMAN _____ DATE 1898



TOWNSHIP SELMA
SECTION 34 T. 22 N R. 10 W
COUNTY WEXFORD





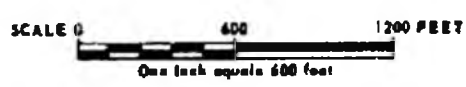
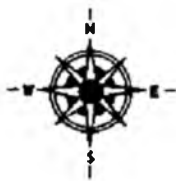
LEGEND

- COUNTY LINE
- CORPORATE LIMITS
- STATE TRUNKLINE
- COUNTY PRIMARY
- COUNTY LOCAL
- ADJACENT COUNTY
- CITY OR VILLAGE
- STREET

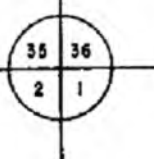
TOTAL FEET 3086 EQUALS 0.58 MILES

I HEREBY CERTIFY THAT THE ROADS SHOWN HEREON BY SYMBOL OR IN GREEN AS LOCAL ROADS ARE IN USE AND ARE UNDER THE JURISDICTION OF THE COUNTY ROAD COMMISSION.

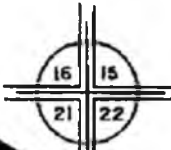
CHAIRMAN _____ DATE 1978
Rev. (1980)



TOWNSHIP SELMA
SECTION 35 T. 22 N R. 10 W
COUNTY WEXFORD



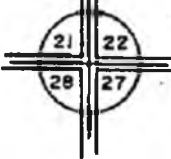
115



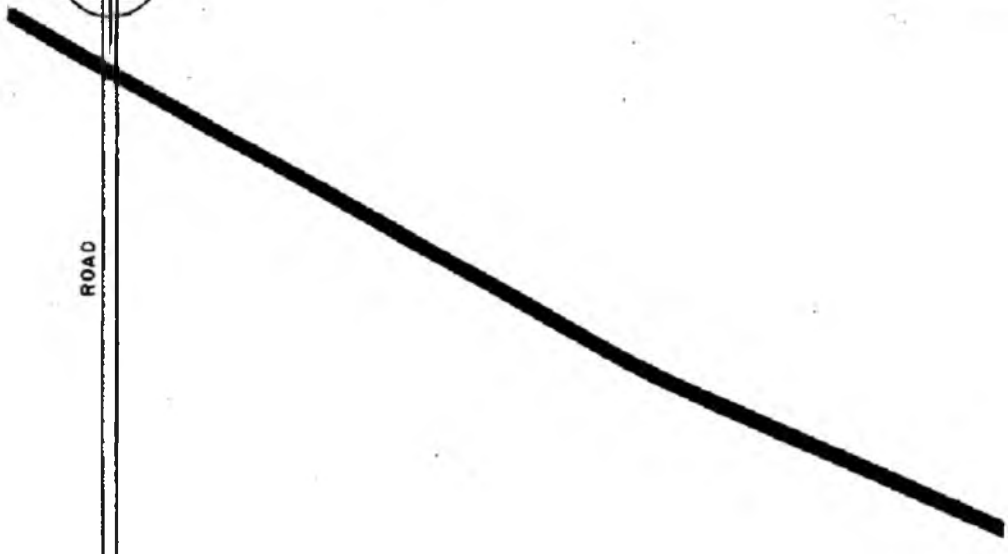
NO. 32

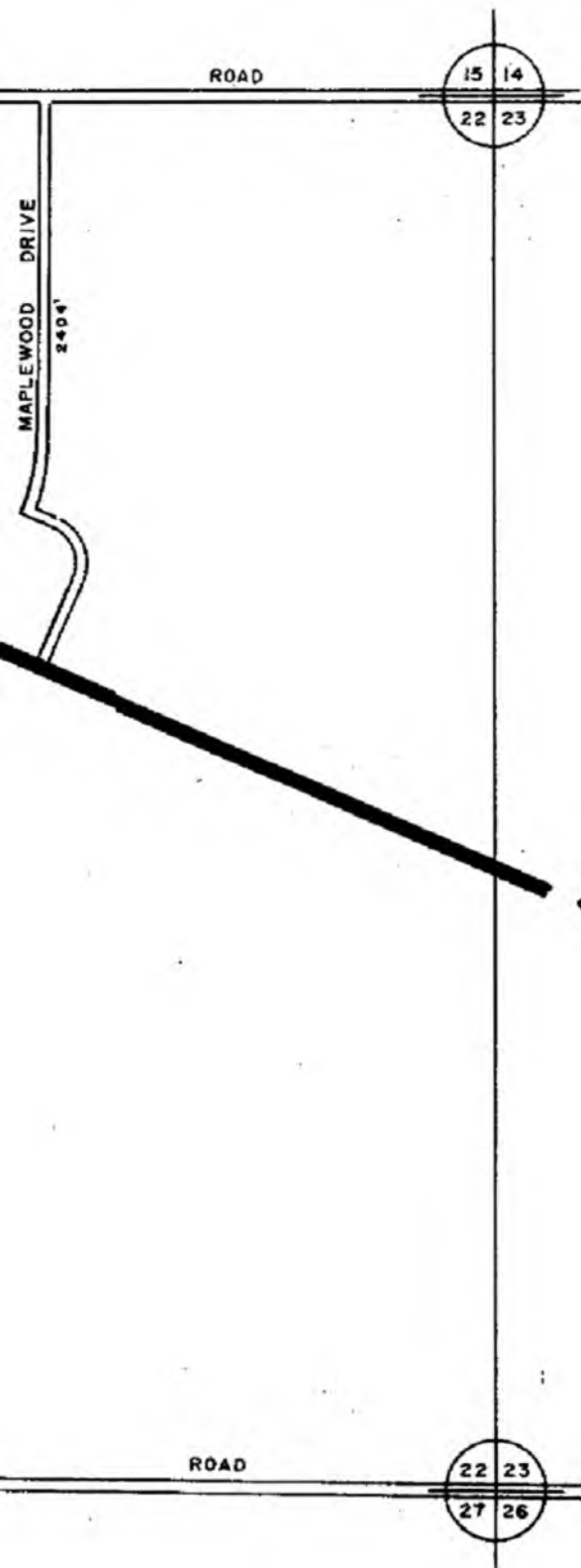
ROAD

NO. 31



NO. 34





LEGEND

COUNTY LINE _____

CORPORATE LIMITS _____

STATE TRUNKLINE _____

COUNTY PRIMARY _____

COUNTY LOCAL _____

ADJACENT COUNTY _____

CITY OR VILLAGE _____

STREET _____

TOTAL FEET 2404 EQUALS 0.46 MILES

I HEREBY CERTIFY THAT THE ROADS SHOWN HEREON BY SYMBOL OR IN GREEN AS LOCAL ROADS ARE IN USE AND ARE UNDER THE JURISDICTION OF THE COUNTY ROAD COMMISSION.

CHAIRMAN _____ DATE 1918

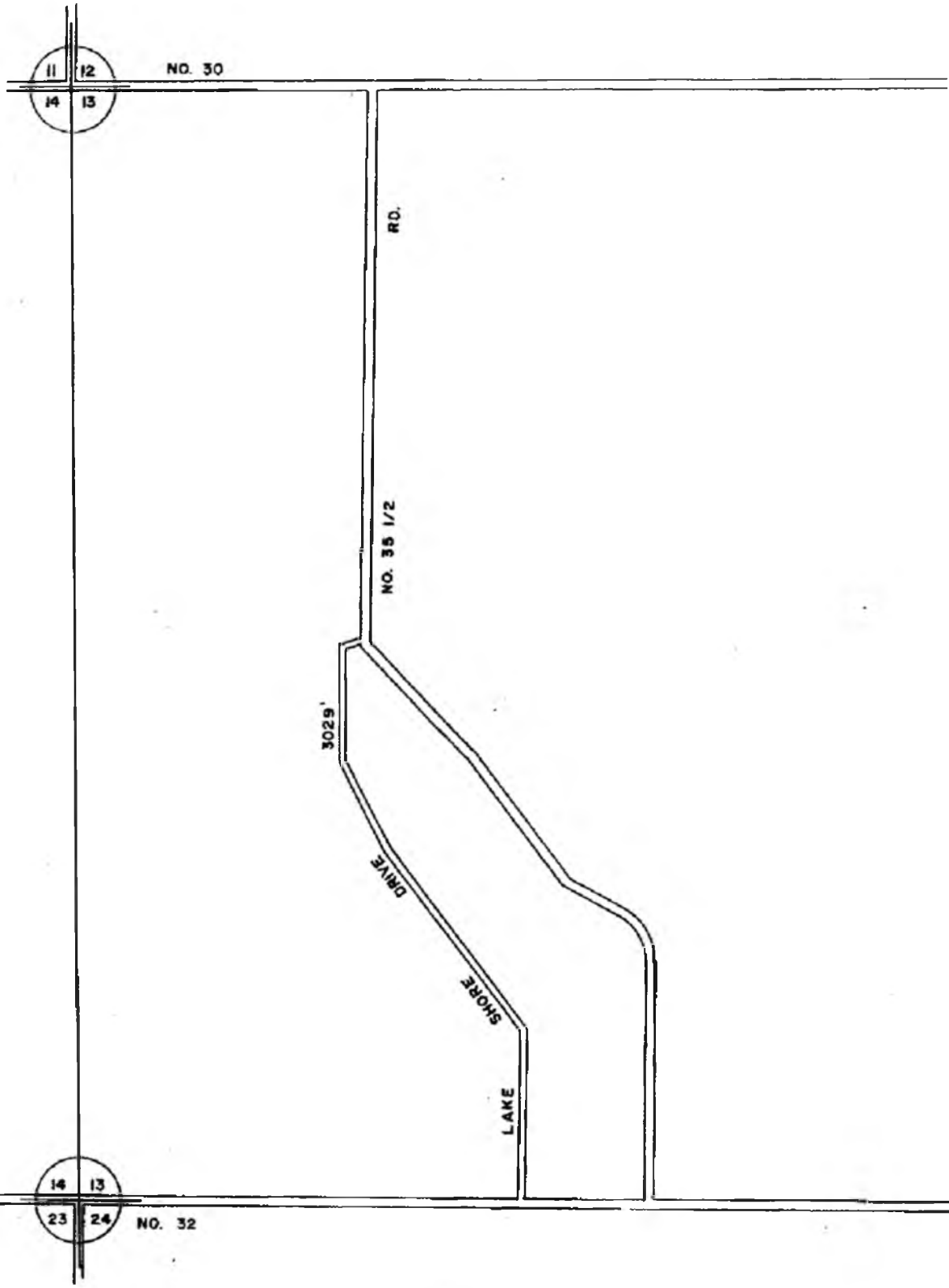


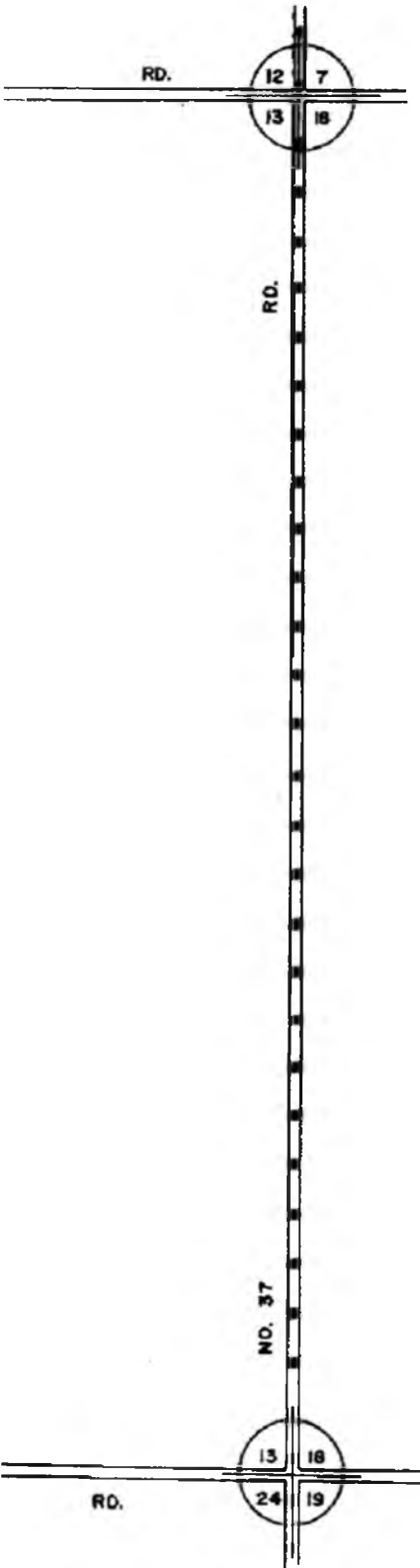
SCALE 0 600 1200 FEET
One inch equals 600 feet

TOWNSHIP SELMA

SECTION 22 T. 22 N R. 10 W

COUNTY WEXFORD





LEGEND

- COUNTY LINE
- CORPORATE LIMITS
- STATE TRUNKLINE
- COUNTY PRIMARY
- COUNTY LOCAL
- ADJACENT COUNTY
- CITY OR VILLAGE STREET

TOTAL FEET 3029' EQUALS 0.57 MILES

I HEREBY CERTIFY THAT THE ROADS SHOWN HEREON BY SYMBOL OR IN GREEN AS LOCAL ROADS ARE IN USE AND ARE UNDER THE JURISDICTION OF THE COUNTY ROAD COMMISSION.

CHAIRMAN

1918
DATE

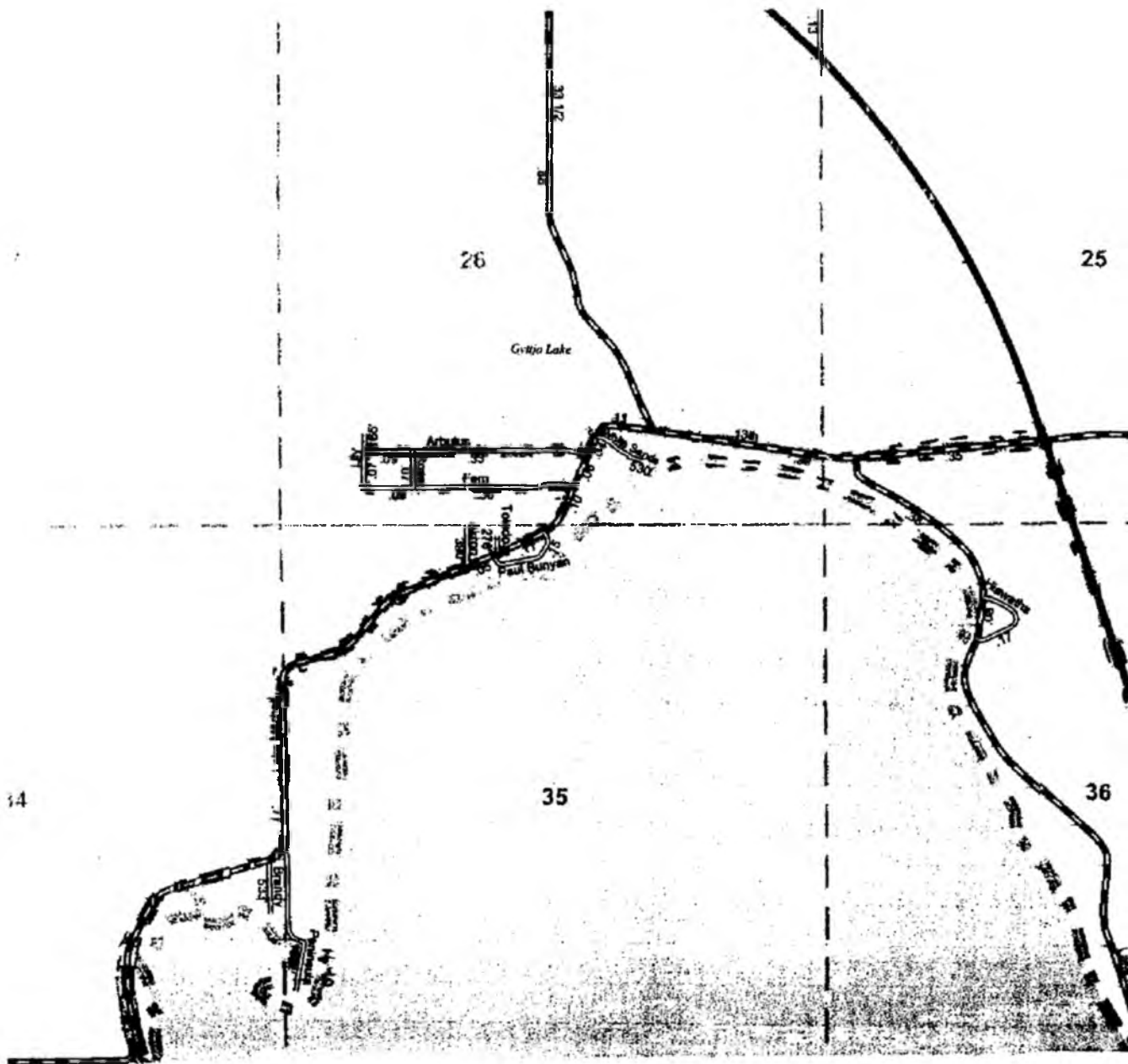


SCALE 0 400 1200 FEET
One inch equals 600 feet

TOWNSHIP SELMA

SECTION 13 T. 22 N R. 10 W

COUNTY WEXFORD



URBAN AREA CERTIFICATION

LEGEND

COUNTY LINE	—————
CORPORATE LIMITS	- - - - -
STATE TRUNKLINE	—————
COUNTY PRIMARY	===== ===== =====
COUNTY LOCAL	===== =====
AJACENT COUNTY	
CITY OR VILLAGE STREET	—————
URBAN BOUNDARY	=====

PRIMARY ROAD SYSTEM IS 3.86 MILES

LOCAL ROAD SYSTEM IS 1.78 MILES

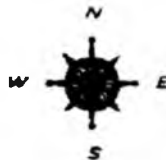
I HEREBY CERTIFY THAT THE ROADS SHOWN HEREON BY SYMBOL OR IN RED AS PRIMARY ROADS AND THOSE SHOWN HEREON BY SYMBOL OR IN GREEN AS LOCAL ROADS ARE IN USE AND ARE UNDER THE JURISDICTION OF THE COUNTY ROAD COMMISSION

CHAIRMAN

DATE

Revised 3-10-2004

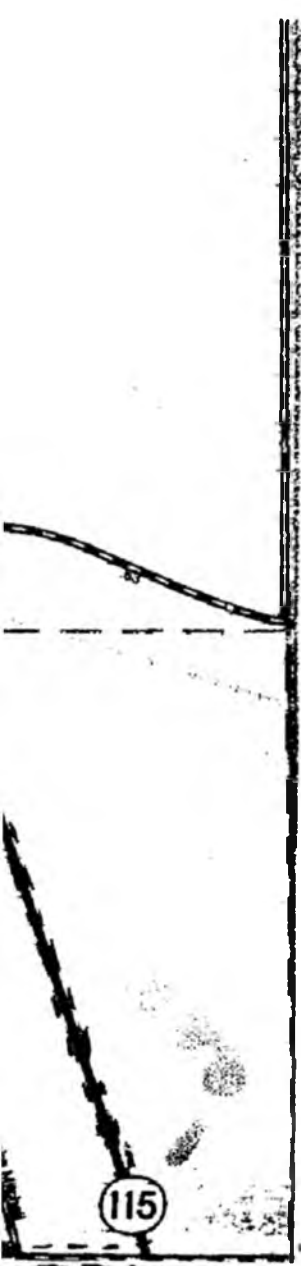
SCALE: 1 INCH = 1,200 FEET

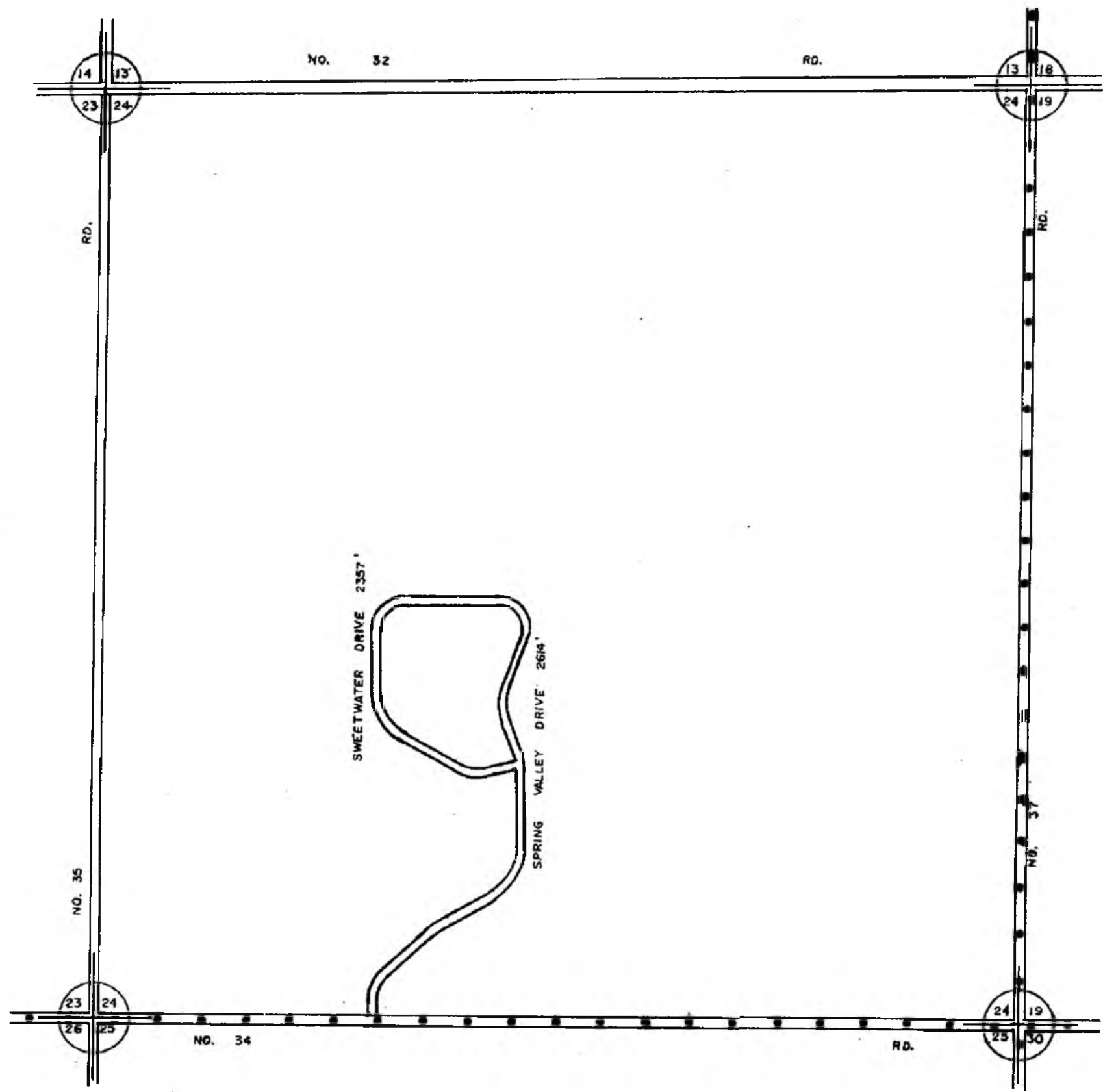


SELMA TOWNSHIP, T22N-R10W

SHEET NUMBER

7H

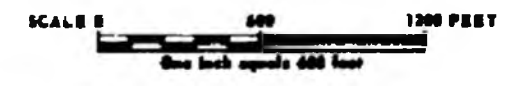




LEGEND

COUNTY LINE	-----
CORPORATE LIMITS	-----
STATE TRIMLINE	=====
COUNTY PRIMARY	=====
COUNTY LOCAL	=====
ADJACENT COUNTY	=====
CITY OR VILLAGE	=====
STREET	=====

LOCAL ROAD SYSTEM
 TOTAL FEET 4971 EQUALS 0.94 MILES
 MILEAGES SHALL BE TO THE NEAREST ONE HUNDREDTH OF A MILE.



REVISED BY KFH
 DATE 2006
 TOWNSHIP SELMA
 SECTION 24 T. 22N R. 10W
 COUNTY WEXFORD