

- LEGEND**
- COUNTY LINE
 - CORPORATE LIMITS
 - STATE TRUNKLINE
 - COUNTY PRIMARY
 - COUNTY LOCAL
 - ADJACENT COUNTY
 - CITY OR VILLAGE STREET

PRIMARY ROAD SYSTEM IS 6.50 MILES
 LOCAL ROAD SYSTEM IS 55.90 MILES

I HEREBY CERTIFY THAT THE ROADS SHOWN HEREON BY SYMBOL OR IN RED AS PRIMARY ROADS AND THOSE SHOWN HEREON BY SYMBOL OR IN GREEN AS LOCAL ROADS ARE IN USE AND ARE UNDER THE JURISDICTION OF THE COUNTY ROAD COMMISSION.

CHAIRMAN _____ DATE 1998

- ✓ - (0.06) GLEN MOORE RD REV 2003
- ✓ - (1.13) OLD US-131
- ✓ - (0.09) NO. 41 RD
- ✓ - (0.17) NO. 6 RDS
- ✓ - (0.08) S RD
- ✓ - (0.11) 3/4 RD
- ✓ - (0.21) 12 RD
- ✓ + 1.75 4 1/4 RD This sheet
- ✓ - (0.15) Y3 RD
- ✓ + (0.04) 4 1/2 N. Leg @ 12 1/4
- ✓ + (0.04) 4 1/2 S. Leg @ 12 1/4

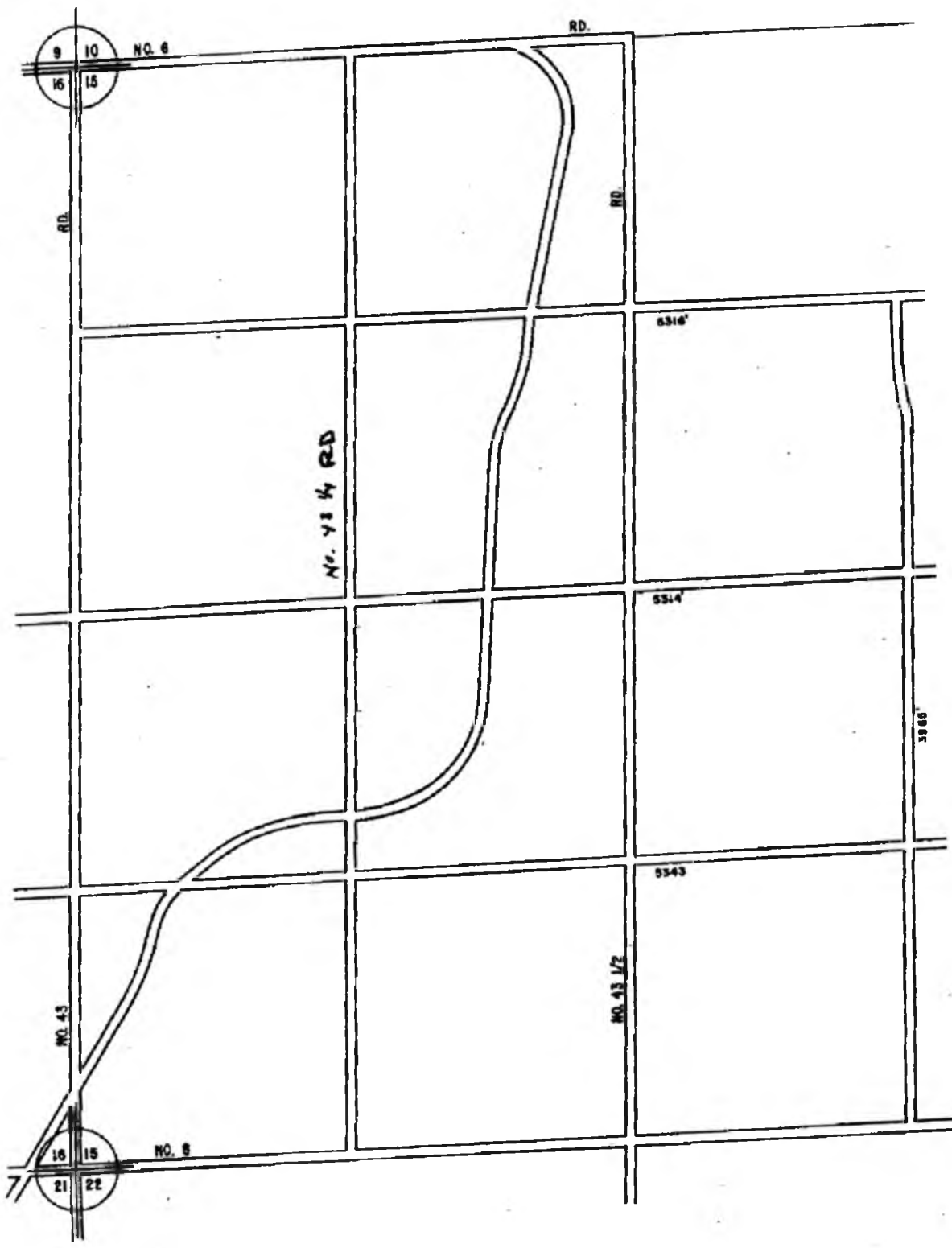


SCALE 0 1 MILE
 One Inch Equals 3000 Ft.

Net Fwy charge 2003 = 0.77

LIBERTY TWP.
 T 24 N - R 9 W
 WEXFORD COUNTY

13	14	15	16
9	10	11	12
5	6	7	8
1	2	3	4



9 10
15 15

NO. 6

RD.

RD.

RD.

No. 43 RD

5316'

5514'

39 60'

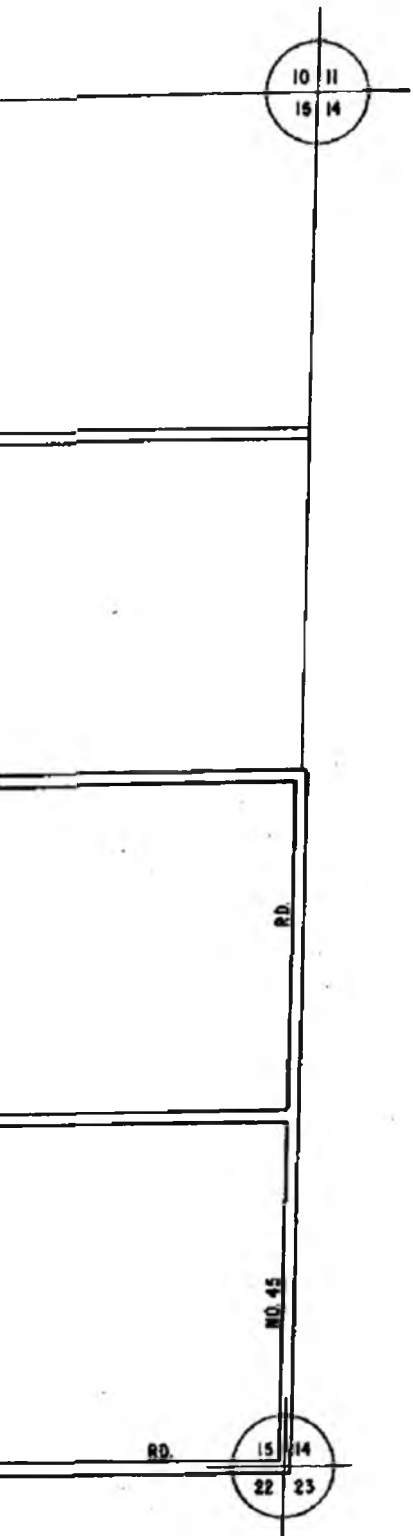
5543

NO. 43 1/2

NO. 43

15 15
21 22

NO. 6



LEGEND

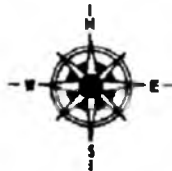
- COUNTY LINE
- CORPORATE LIMITS
- STATE TRUNKLINE
- COUNTY PRIMARY
- COUNTY LOCAL
- ADJACENT COUNTY
- CITY OR VILLAGE
- STREET

TOTAL FEET 17750 EQUALS 3.78 MILES

I HEREBY CERTIFY THAT THE ROADS SHOWN HEREON BY SYMBOL OR IN GREEN AS LOCAL ROADS ARE IN USE AND ARE UNDER THE JURISDICTION OF THE COUNTY ROAD COMMISSION.

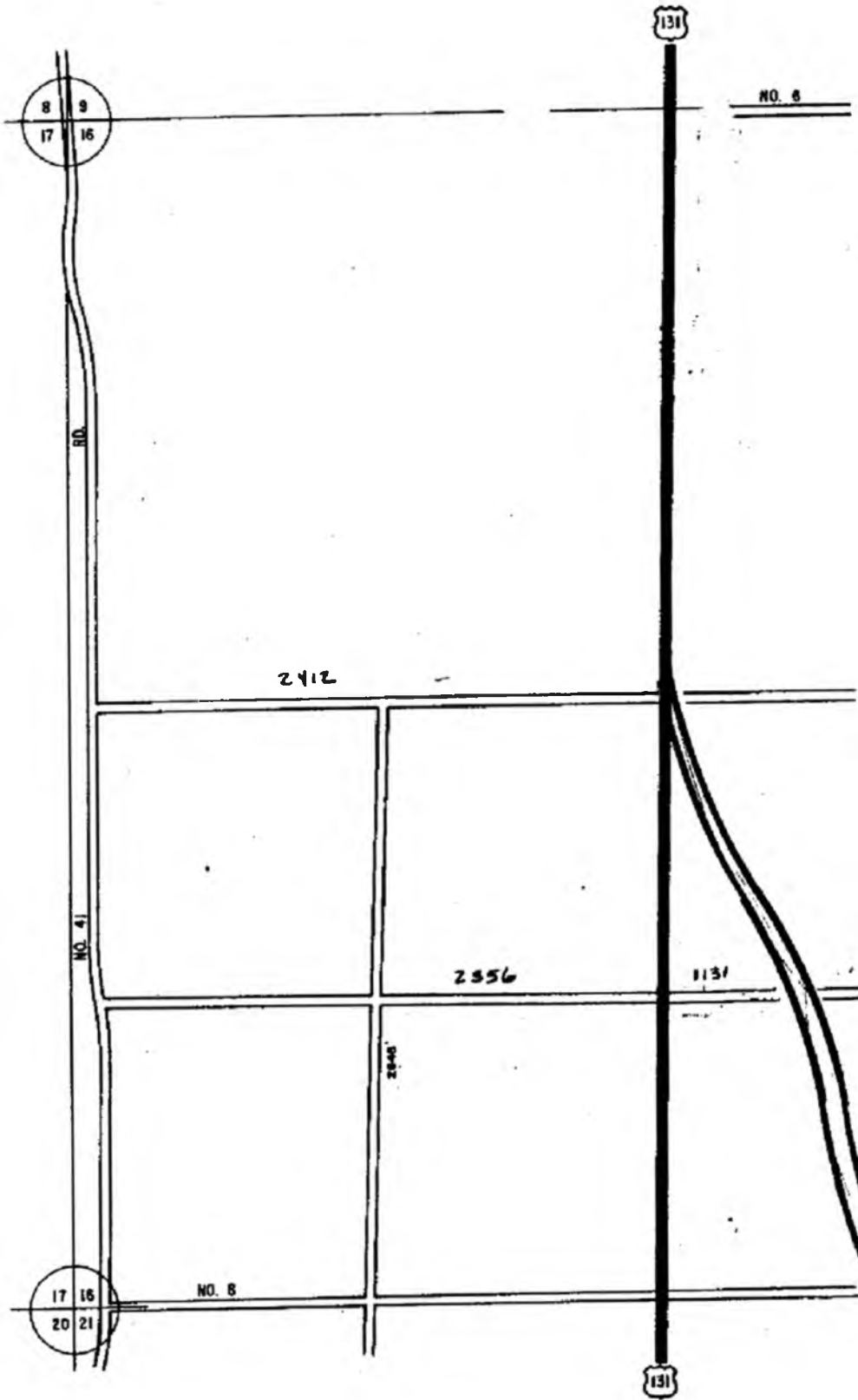
CHAIRMAN _____ DATE 1998

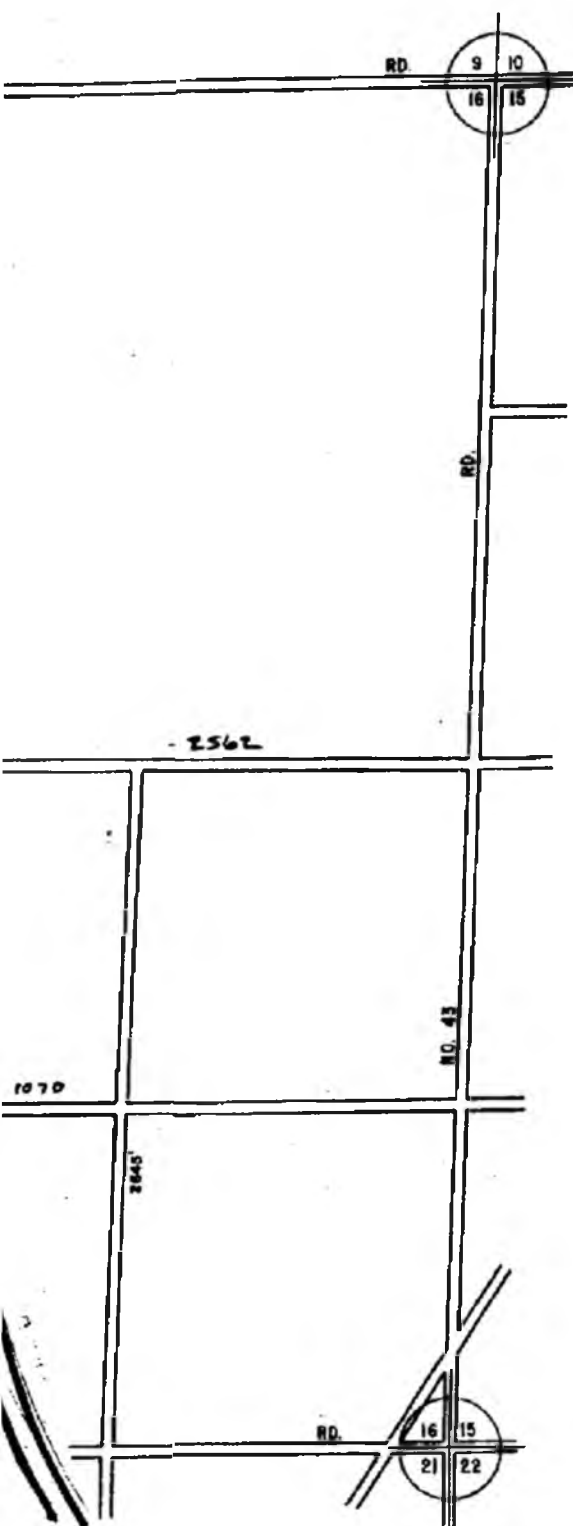
1.0 4 1/4 231 2003
Th. S. Whit.



SCALE 0 600 1200 FEET
One inch equals 600 feet

TOWNSHIP LIBERTY
SECTION 15 T. 24 N R. 9 W
COUNTY WEXFORD





LEGEND

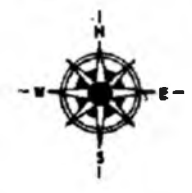
COUNTY LINE	_____
CORPORATE LIMITS	-----
STATE TRUNKLINE	=====
COUNTY PRIMARY	=====
COUNTY LOCAL	=====
ADJACENT COUNTY	=====
CITY OR VILLAGE STREET	=====

TOTAL FEET: 15024 EQUALS: 2.84 MILES

I HEREBY CERTIFY THAT THE ROADS SHOWN HEREON BY SYMBOL OR IN GREEN AS LOCAL ROADS ARE IN USE AND ARE UNDER THE JURISDICTION OF THE COUNTY ROAD COMMISSION.

CHAIRMAN _____ DATE 1998

REV 2003

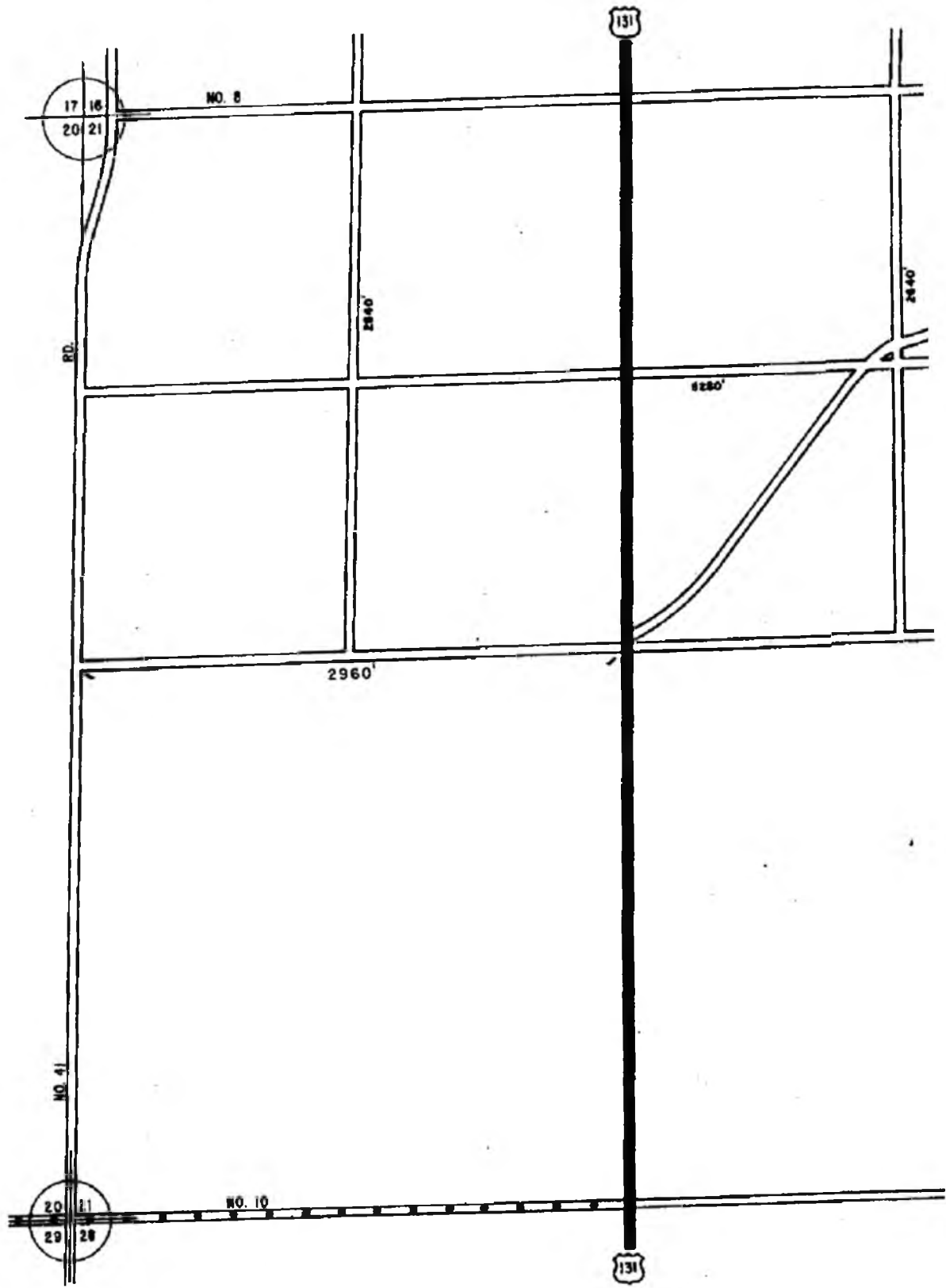


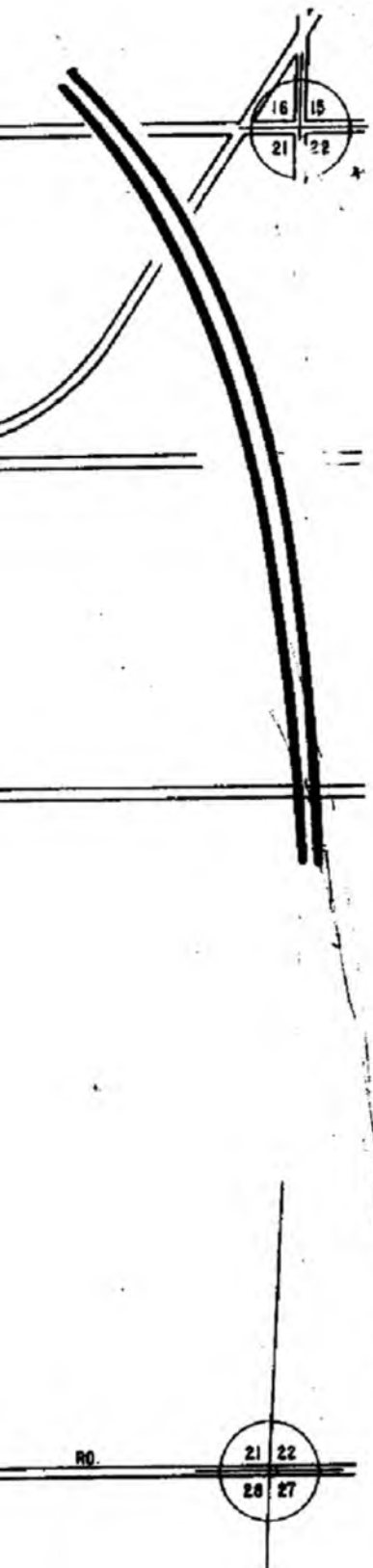
SCALE 0 600 1200 FEET
One inch equals 600 feet

TOWNSHIP LIBERTY
SECTION 16 T. 24 N R. 9 W
COUNTY WEXFORD

2003 Hwy Rev.
 - (439A) 6 3/4 Rd
 - (284A) 6 1/2 Rd

 Net changes from Hwy 2003 = 725





LEGEND

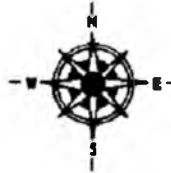
- COUNTY LINE
- CORPORATE LIMITS
- STATE TRUNKLINE
- COUNTY PRIMARY
- COUNTY LOCAL
- ADJACENT COUNTY
- CITY OR VILLAGE
- STREET

TOTAL FEET. 1680 EQUALS 2.56 MILES

I HEREBY CERTIFY THAT THE ROADS SHOWN HEREON BY SYMBOL OR IN GREEN AS LOCAL ROADS ARE IN USE AND ARE UNDER THE JURISDICTION OF THE COUNTY ROAD COMMISSION.

CHAIRMAN

1930
DATE



SCALE 0 400 1200 FEET
One inch equals 600 feet

TOWNSHIP LIBERTY
SECTION 21 T. 24 N R. 9 W
COUNTY WEXFORD



NO. 8



NO. 4 1/2 IN RD.

2840'

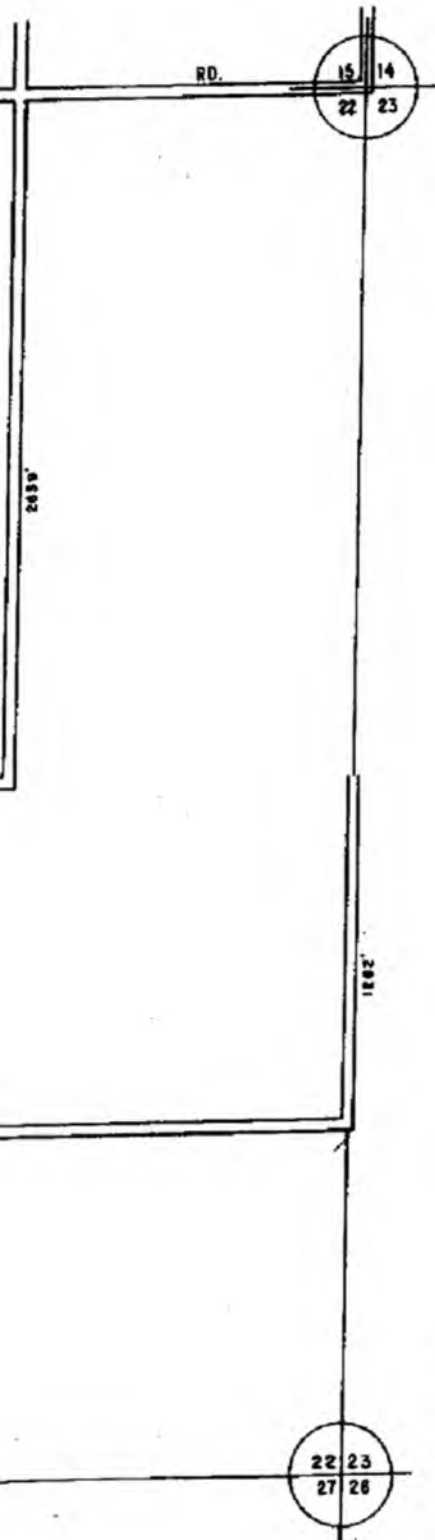
3931'

4825'



NO. 10

RD.



LEGEND

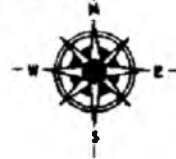
- COUNTY LINE
- CORPORATE LIMITS
- STATE TRUNKLINE
- COUNTY PRIMARY
- COUNTY LOCAL
- ADJACENT COUNTY
- CITY OR VILLAGE STREET

TOTAL FEET ~~4567~~ EQUALS 2.26 MILES

I HEREBY CERTIFY THAT THE ROADS SHOWN HEREON BY SYMBOL OR IN GREEN AS LOCAL ROADS ARE IN USE AND ARE UNDER THE JURISDICTION OF THE COUNTY ROAD COMMISSION.

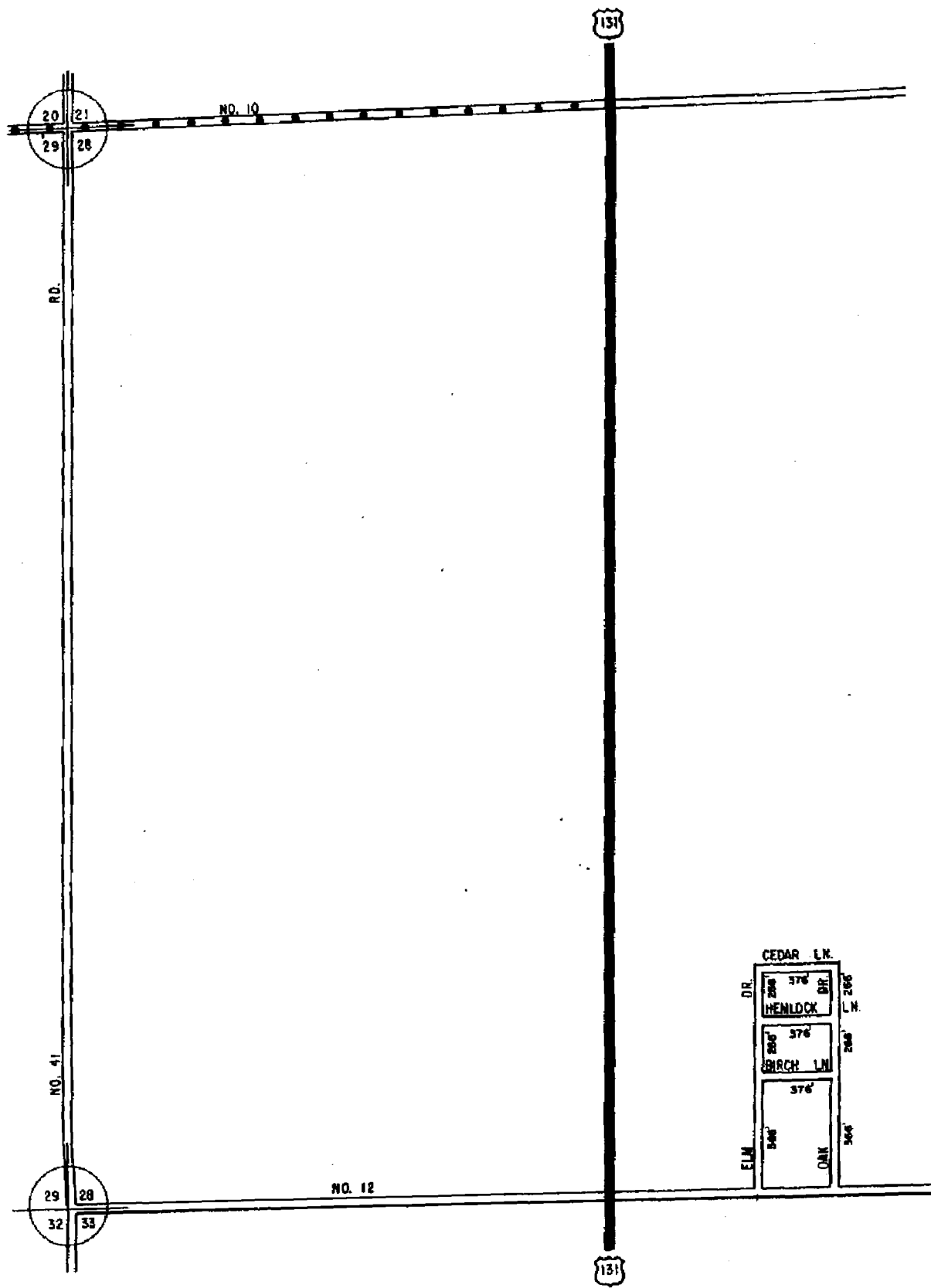
CHAIRMAN _____ DATE 1998

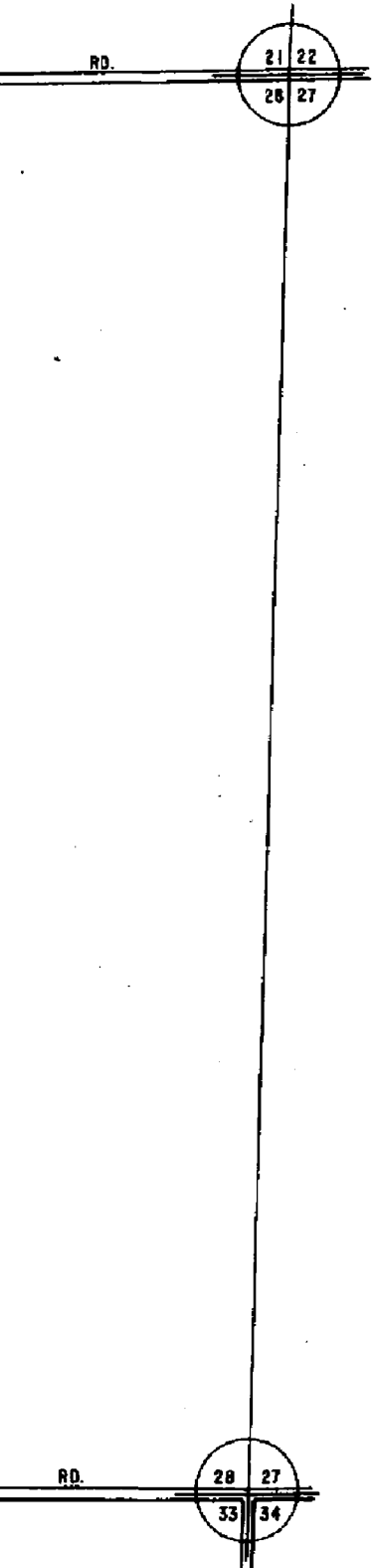
4 3/4 Rd REV. 2003
place 33rd on 5th 1/4



SCALE 0 600 1200 FEET
 One inch equals 600 feet

TOWNSHIP LIBERTY
 SECTION 22 T. 24 N R. 9 W
 COUNTY WEXFORD





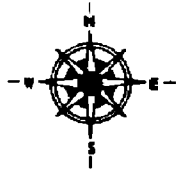
LEGEND

- COUNTY LINE _____
- CORPORATE LIMITS _____
- STATE TRUNKLINE _____
- COUNTY PRIMARY _____
- COUNTY LOCAL _____
- ADJACENT COUNTY _____
- CITY OR VILLAGE _____
- STREET _____

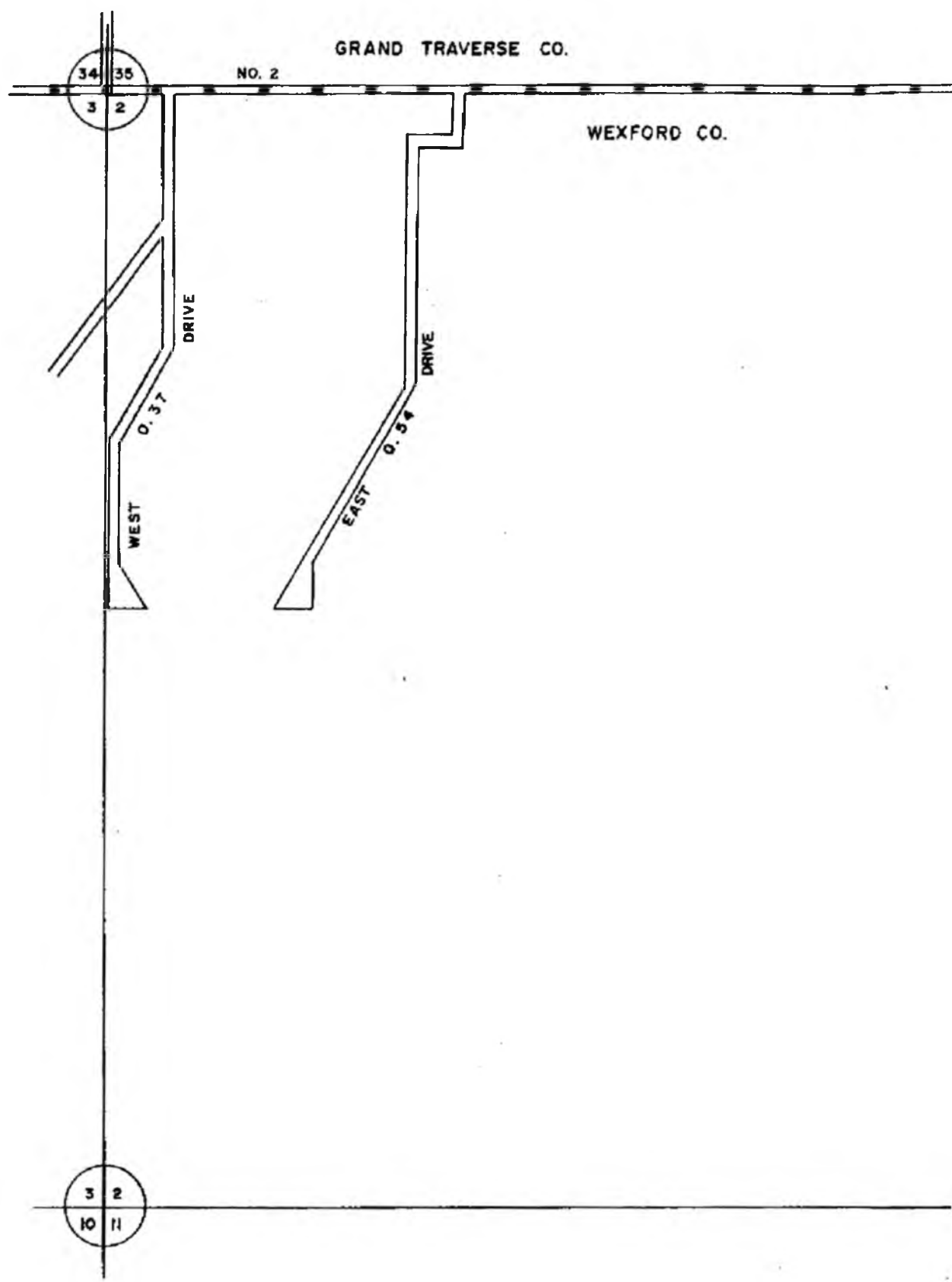
TOTAL FEET 3324 EQUALS 0.63 MILES

I HEREBY CERTIFY THAT THE ROADS SHOWN HEREON BY SYMBOL OR IN GREEN AS LOCAL ROADS ARE IN USE AND ARE UNDER THE JURISDICTION OF THE COUNTY ROAD COMMISSION.

CHAIRMAN 1928
DATE



TOWNSHIP LIBERTY
SECTION 28 T. 24 N R. 9 W
COUNTY WEXFORD



GRAND TRAVERSE CO.

NO. 2

WEXFORD CO.

34 35
3 2

3 2
10 11

DRIVE

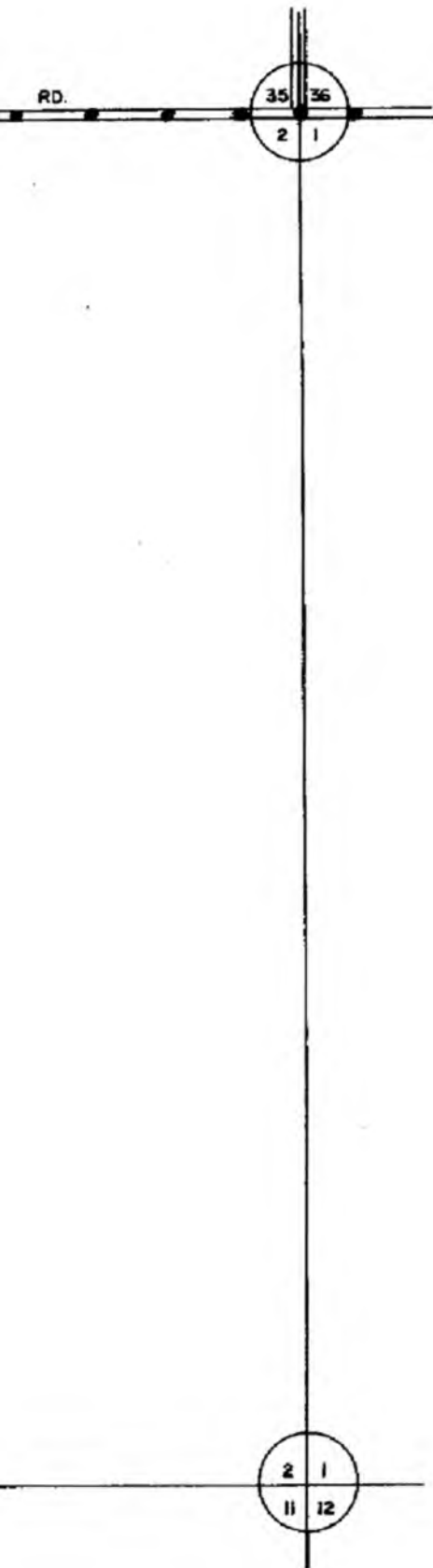
WEST

0.37

DRIVE

EAST

0.54



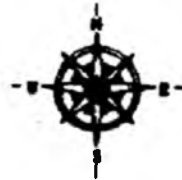
LEGEND

- COUNTY LINE
- CORPORATE LIMITS
- STATE TRUNKLINE
- COUNTY PRIMARY
- COUNTY LOCAL
- ADJACENT COUNTY
- CITY OR VILLAGE
- STREET

LOCAL ROAD SYSTEM

TOTAL FEET 4805 EQUALS 0.91 MILES

MILEAGES SHALL BE TO THE NEAREST ONE HUNDREDTH OF A MILE.



SCALE 0 400 1200 FEET

 One inch equals 600 feet

CHAIRMAN _____ DATE 1993

I HEREBY CERTIFY THAT THE ROADS SHOWN HEREON BY SYMBOL OR IN GREEN AS LOCAL ROADS ARE IN USE AND ARE UNDER THE JURISDICTION OF THE COUNTY ROAD COMMISSION.

REVISED BY _____

DATE 1993

TOWNSHIP LIBERTY

SECTION 2 T. 24 N. R. 9 W

COUNTY WEXFORD

SHEET NUMBER 16 F