

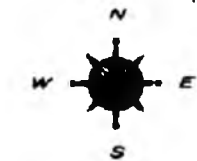
LEGEND

- COUNTY LINE
- CORPORATE LIMITS
- STATE TRUNKLINE
- COUNTY PRIMARY
- COUNTY LOCAL
- ADJACENT COUNTY
- CITY OR VILLAGE STREET

PRIMARY ROAD SYSTEM IS 10.81 MILES  
 LOCAL ROAD SYSTEM IS 50.04 MILES

I HEREBY CERTIFY THAT THE ROADS SHOWN HEREON BY SYMBOL OR IN RED AS PRIMARY ROADS AND THOSE SHOWN HEREON BY SYMBOL OR IN GREEN AS LOCAL ROADS ARE IN USE AND ARE UNDER THE JURISDICTION OF THE COUNTY ROAD COMMISSION.

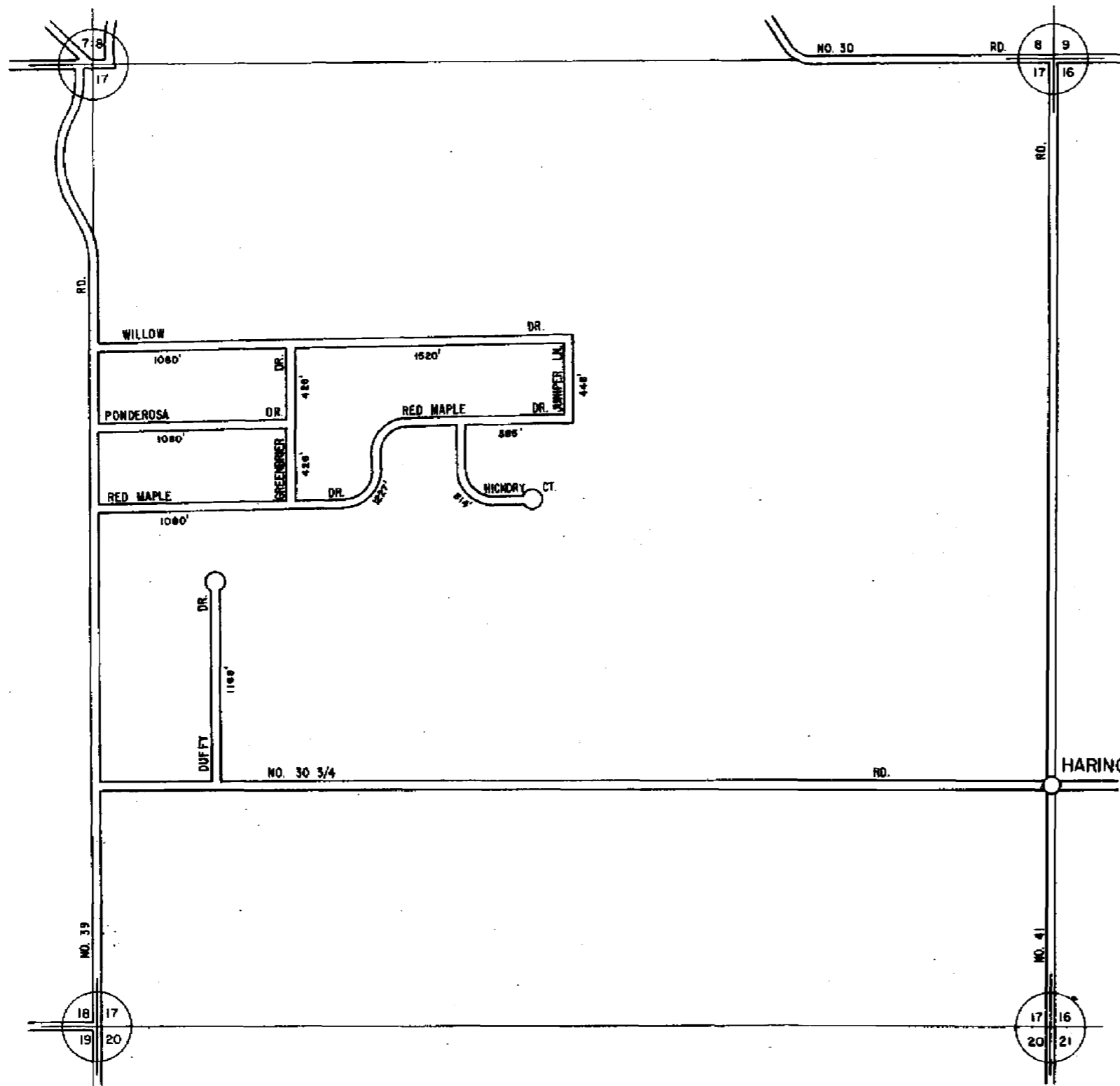
CHAIRMAN \_\_\_\_\_ DATE 1/9/08  
 Rev. (1980)  
 " (1986)  
 " (1987)  
 " (1991)  
 " (2001)  
 " (2003)  
 Rev. 2004



SCALE 0 1 MILE  
 One Inch Equals 3000 Ft.

HARING TWP.  
 T22 N - R 9 W  
 WEXFORD COUNTY

13	14	15	16
9	10	11	12
5	6	7	8
1	2	3	4

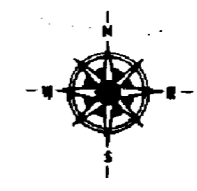


**LEGEND**  
 COUNTY LINE \_\_\_\_\_  
 CORPORATE LIMITS \_\_\_\_\_  
 STATE TRUNKLINE \_\_\_\_\_  
 COUNTY PRIMARY \_\_\_\_\_  
 COUNTY LOCAL \_\_\_\_\_  
 ADJACENT COUNTY \_\_\_\_\_  
 CITY OR VILLAGE \_\_\_\_\_  
 STREET \_\_\_\_\_

TOTAL FEET 9854 EQUALS 1.87 MILES

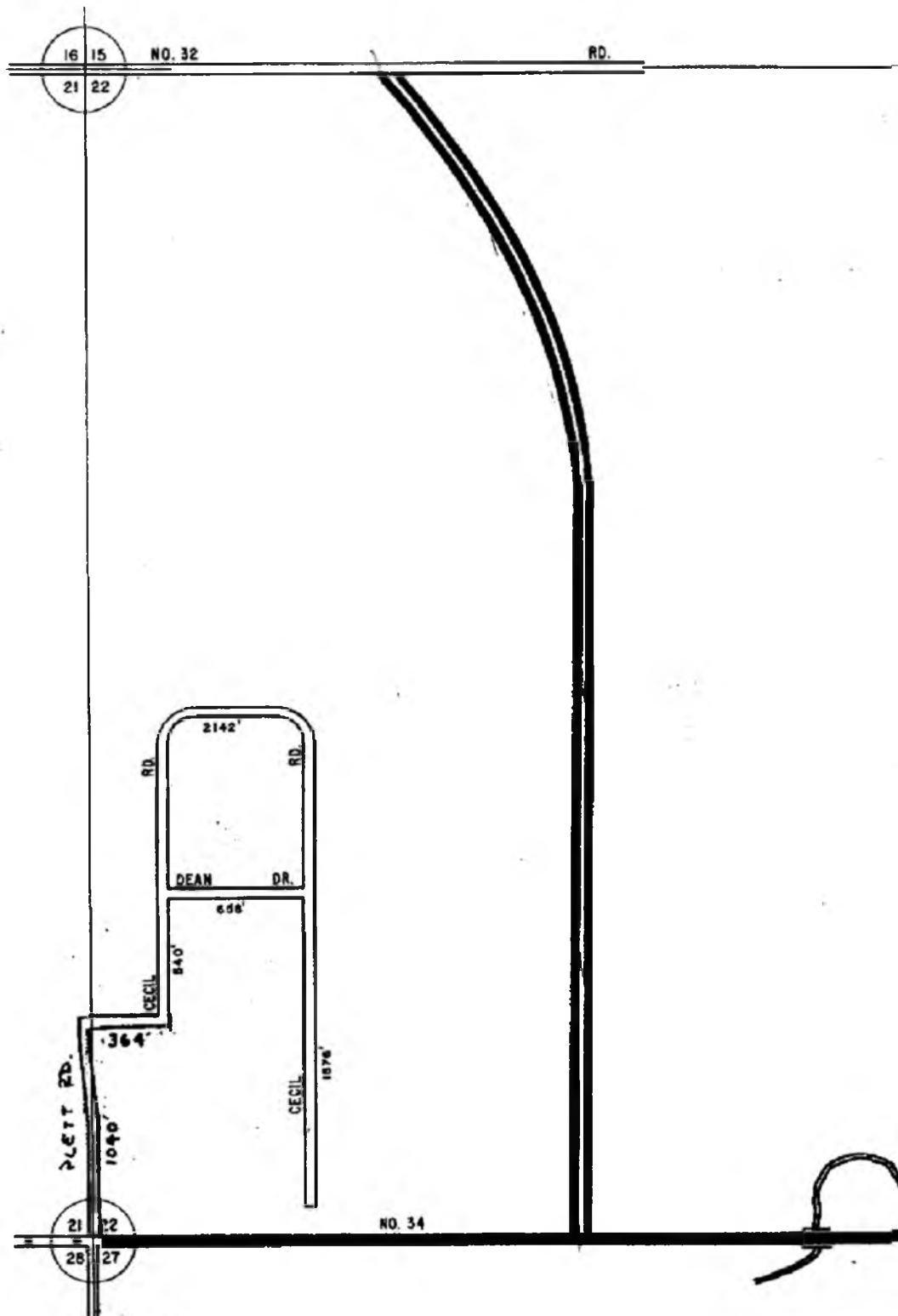
I HEREBY CERTIFY THAT THE ROADS SHOWN HEREON BY SYMBOL OR IN GREEN AS LOCAL ROADS ARE IN USE AND ARE UNDER THE JURISDICTION OF THE COUNTY ROAD COMMISSION.

CHAIRMAN \_\_\_\_\_ DATE 1976



SCALE 0 400 1200 FEET  
 One inch equals 400 feet

TOWNSHIP HARING  
 SECTION 17 T. 22 N R. 9 W  
 COUNTY WEXFORD



16 15  
21 22

NO. 32

RD.

PLETT RD.

21 22  
28 27

NO. 34

2142'

DEAN DR.

636'

CECIL

840'

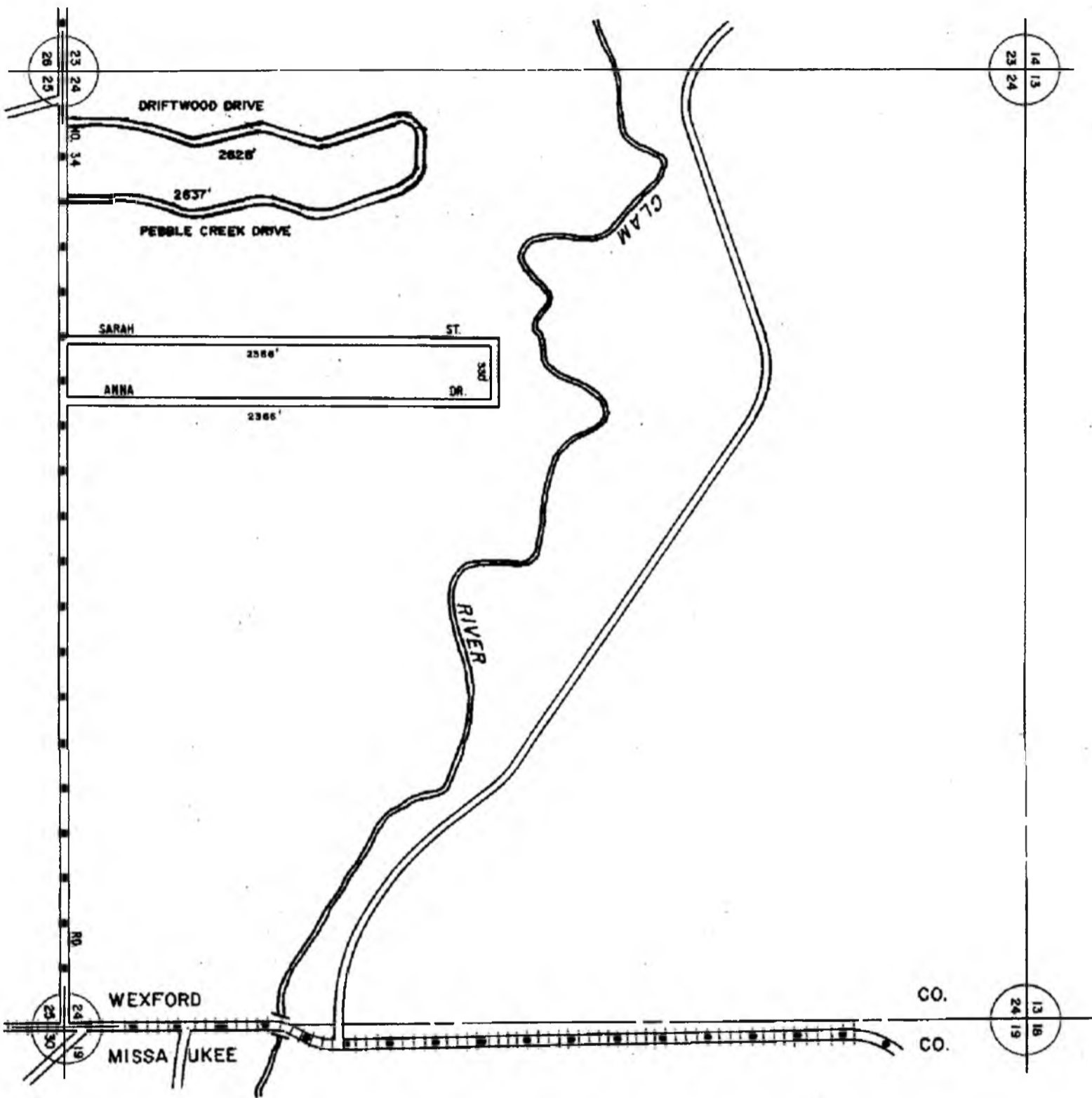
364'

1040'

CECIL

1876'





COUNTY LINE  
 CORPORATE LIMITS  
 STATE TRUNKLINE  
 COUNTY PRIMARY  
 COUNTY LOCAL  
 ADJACENT COUNTY  
 CITY OR VILLAGE  
 STREET

TOTAL FEET 6227 EQUALS 1.96 MILES

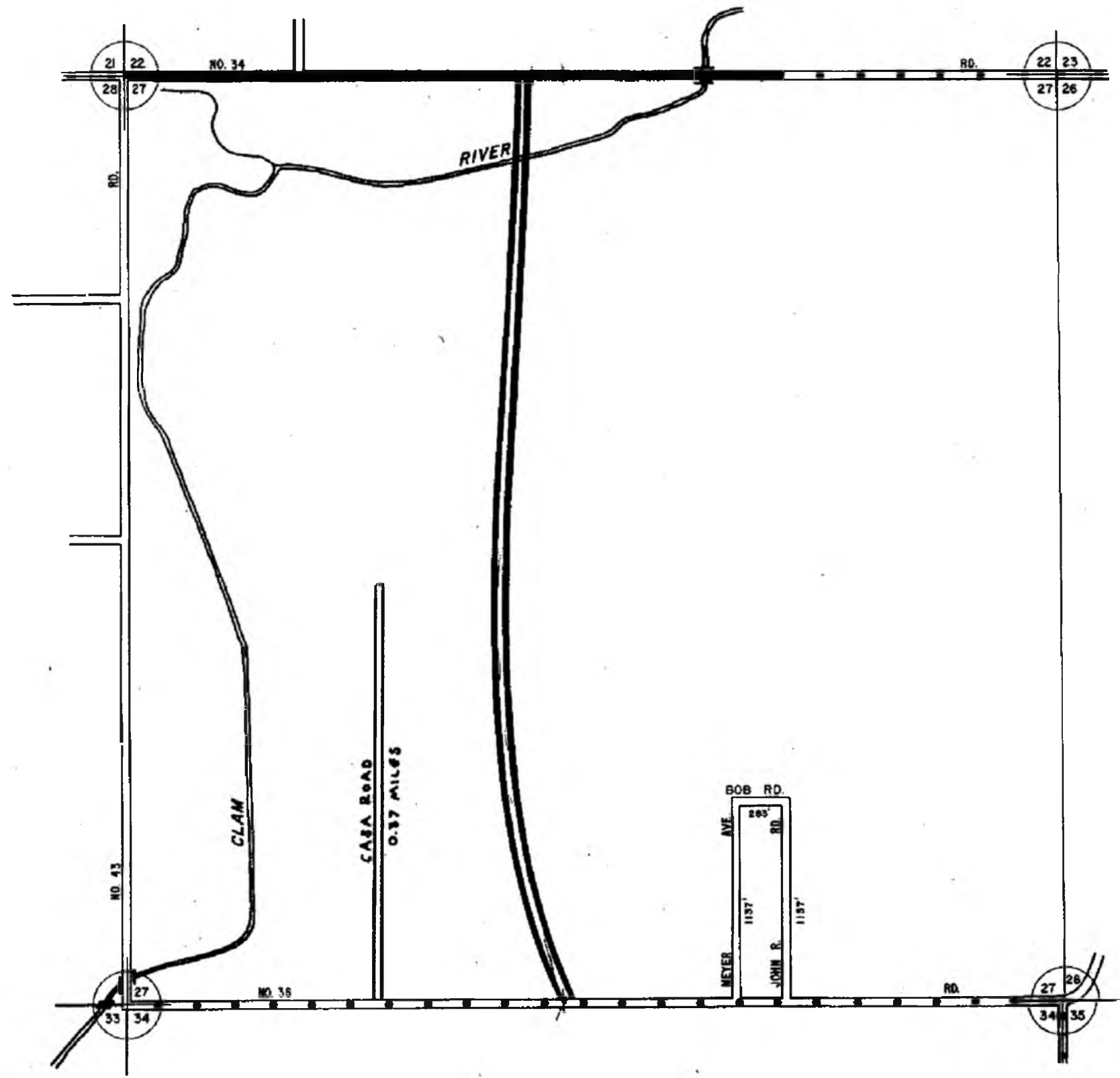
I HEREBY CERTIFY THAT THE ROADS  
 SHOWN HEREON BY SYMBOL OR IN GREEN  
 AS LOCAL ROADS ARE IN USE AND ARE  
 UNDER THE JURISDICTION OF THE COUNTY  
 ROAD COMMISSION.

CHAIRMAN  
 DATE 1988  
 MAY 1988



SCALE 0 400 800 1200 FEET  
 One inch equals 400 feet

TOWNSHIP HARING  
 SECTION 24 T. 22 N. R. 9 W  
 COUNTY WEXFORD



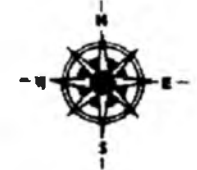
LEGEND

COUNTY LINE	---
CORPORATE LIMITS	----
STATE TRUNKLINE	=====
COUNTY PRIMARY	=====
COUNTY LOCAL	=====
ADJACENT COUNTY	=====
CITY OR VILLAGE STREET	=====

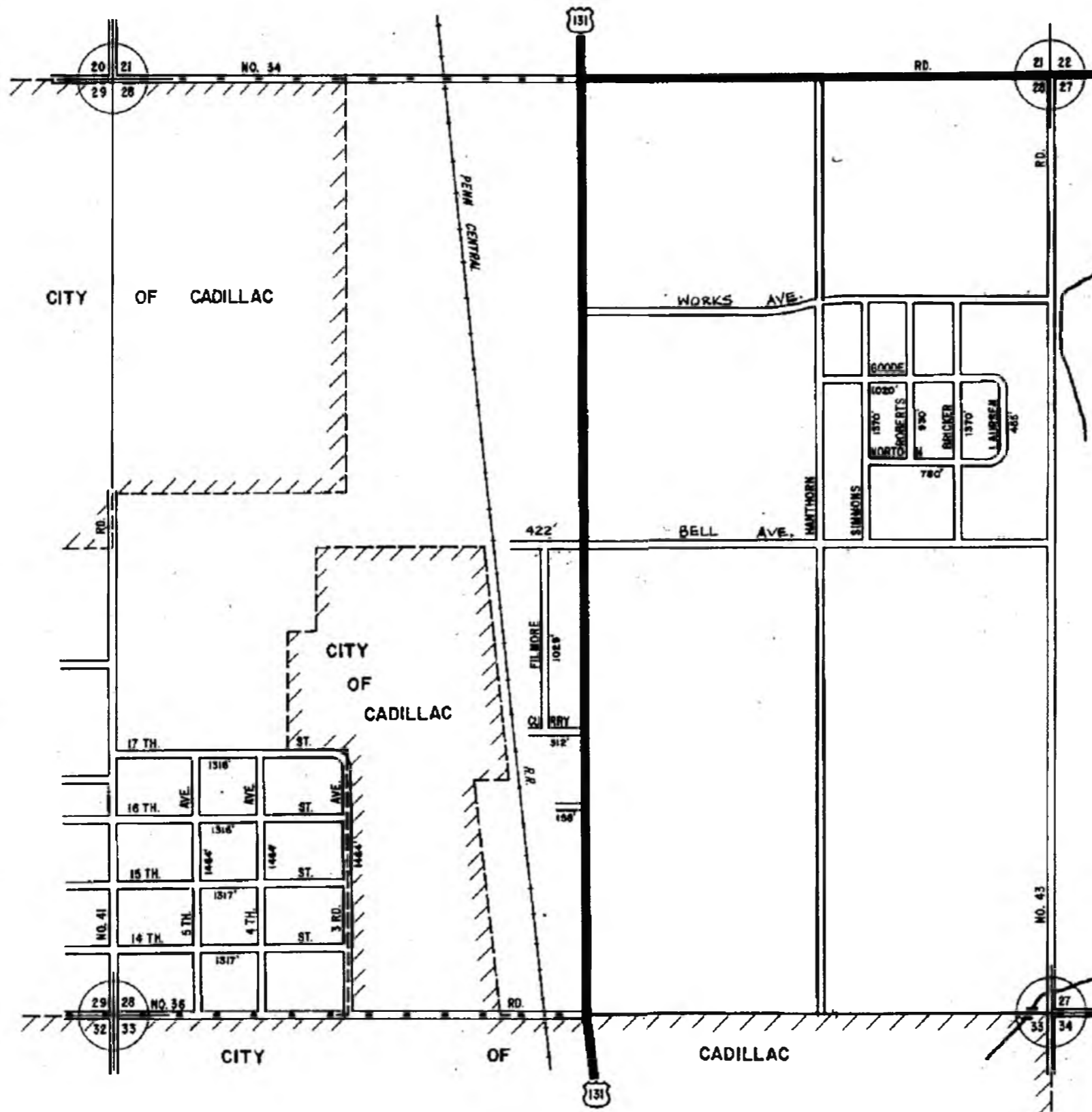
TOTAL FEET 4533 EQUAL 0.86 MILES

I HEREBY CERTIFY THAT THE ROADS SHOWN HEREON BY SYMBOL OR IN GREEN AS LOCAL ROADS ARE IN USE AND ARE UNDER THE JURISDICTION OF THE COUNTY ROAD COMMISSION.

CHAIRMAN \_\_\_\_\_ DATE 1978-  
 Rev. (1987)  
 Rev. (2001)



TOWNSHIP HARING  
 SECTION 27 T. 22 N R. 9 W  
 COUNTY WEXFORD



- LEGEND**
- COUNTY LINE
  - CORPORATE LIMITS
  - STATE TRUNKLINE
  - COUNTY PRIMARY
  - COUNTY LOCAL
  - ADJACENT COUNTY
  - CITY OR VILLAGE
  - STREET

TOTAL FEET 17504 EQUALS 3.32 MILES

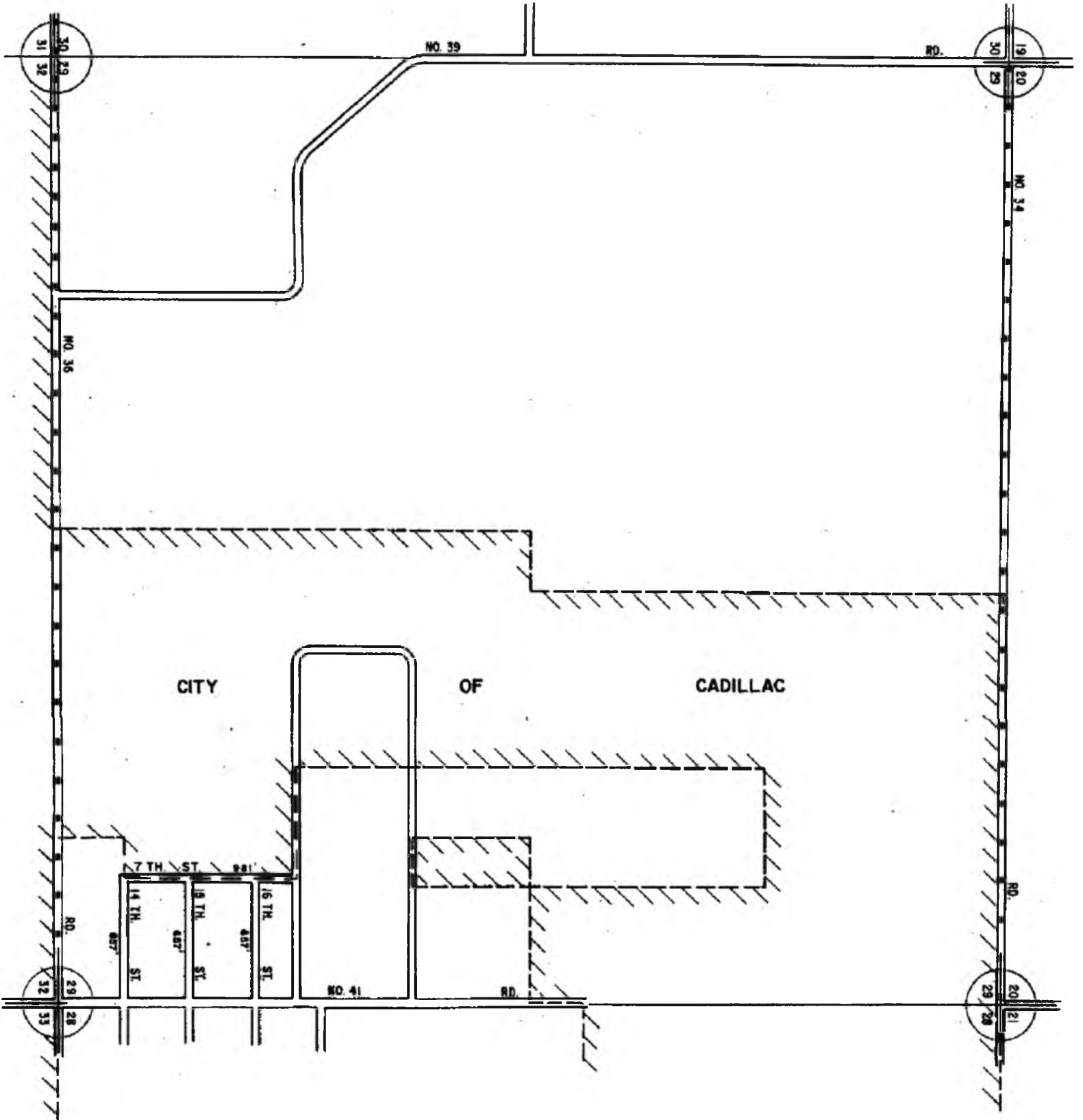
I HEREBY CERTIFY THAT THE ROADS SHOWN HEREON BY SYMBOL OR IN GREEN AS LOCAL ROADS ARE IN USE AND ARE UNDER THE JURISDICTION OF THE COUNTY ROAD COMMISSION.

CHAIRMAN \_\_\_\_\_  
 DATE 1998  
 Rev. (1967)



SCALE 0 600 1200 FEET  
 One inch equals 600 feet

TOWNSHIP HARING  
 SECTION 28 T. 22 N R. 9 W  
 COUNTY WEXFORD



LEGEND

- COUNTY LINE
- CORPORATE LIMITS
- STATE TRUNKLINE
- COUNTY PRIMARY
- COUNTY LOCAL
- ADJACENT COUNTY
- CITY OR VILLAGE STREET

TOTAL FEET 2952 EQUALS 0.56 MILES

I HEREBY CERTIFY THAT THE ROADS SHOWN HEREON BY SYMBOL OR IN GREEN AS LOCAL ROADS ARE IN USE AND ARE UNDER THE JURISDICTION OF THE COUNTY ROAD COMMISSION.

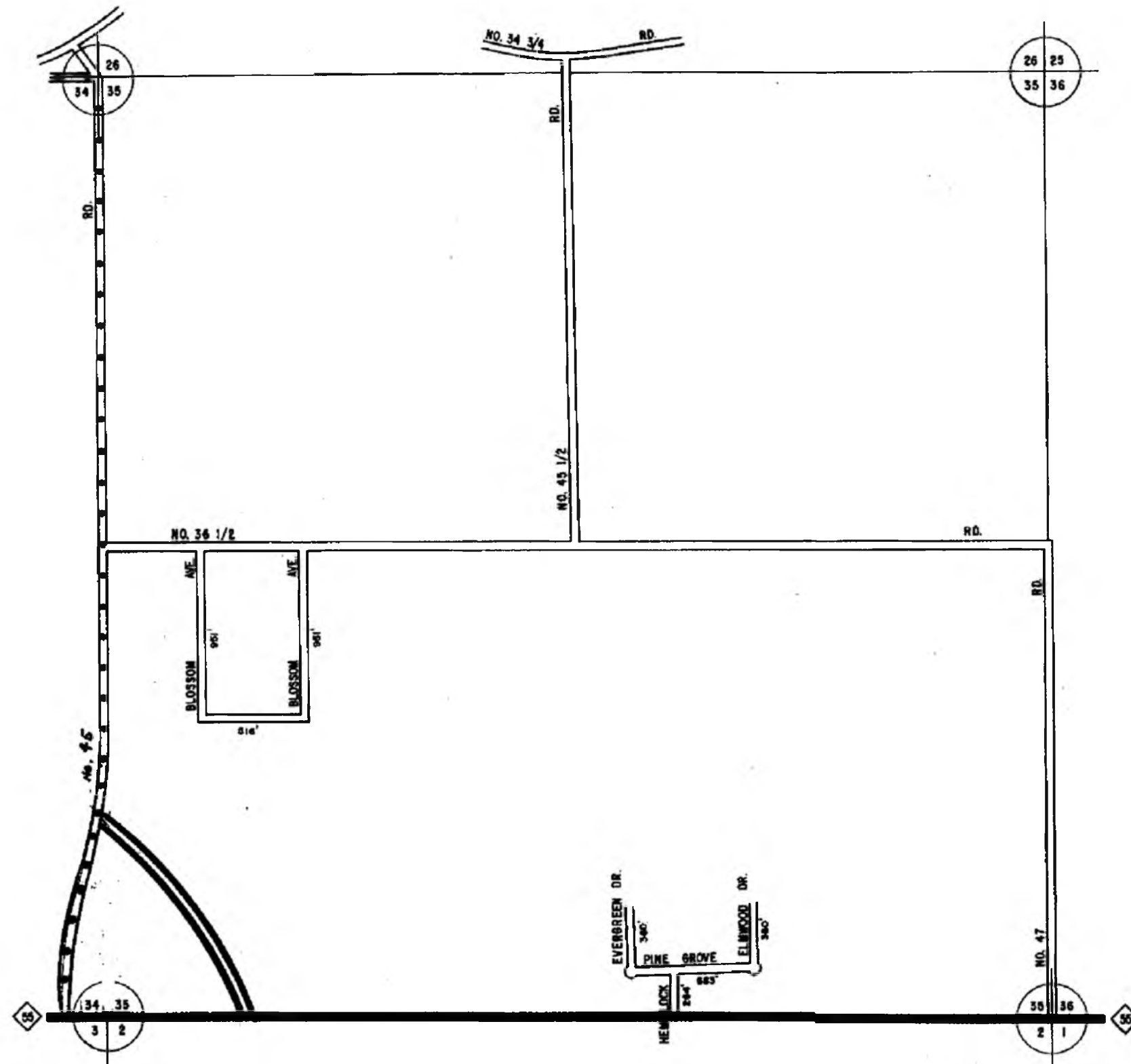
CHAIRMAN \_\_\_\_\_ DATE 1/19/81  
 Rev. (1987)



SCALE 0 500 1000 FEET  
 One inch equals 600 feet

TOWNSHIP HARING  
 SECTION 29 T. 22 N. R. 9 W.  
 COUNTY WEXFORD





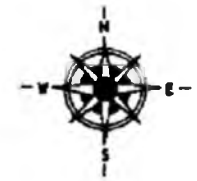
LEGEND

COUNTY LINE	-----
CORPORATE LIMITS	-----
STATE TRUNKLINE	=====
COUNTY PRIMARY	=====
COUNTY LOCAL	=====
ADJACENT COUNTY	
CITY OR VILLAGE	
STREET	-----

TOTAL FEET 4085 EQUALS 0.77 MILES

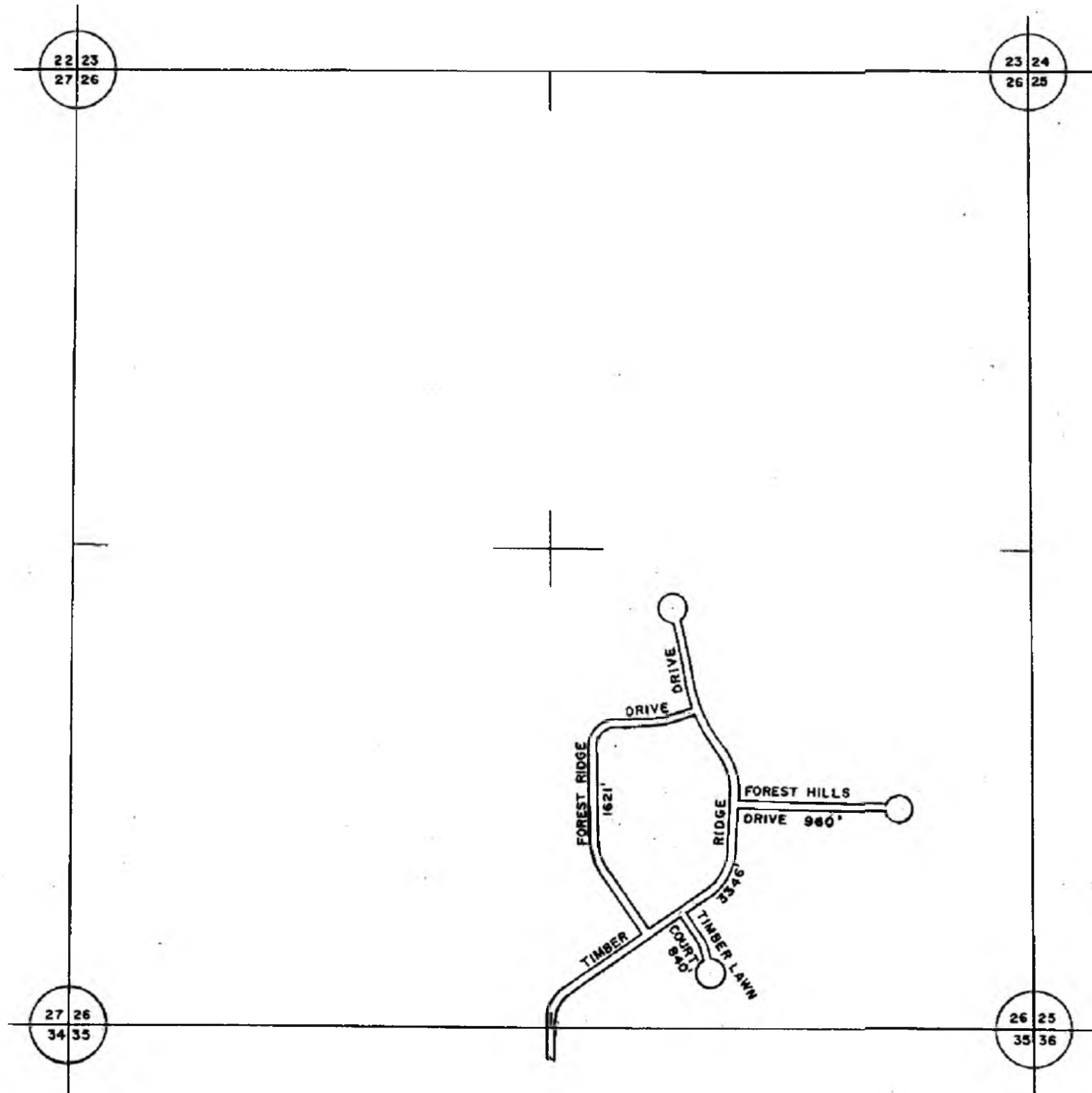
I HEREBY CERTIFY THAT THE ROADS SHOWN HEREON BY SYMBOL OR IN GREEN AS LOCAL ROADS ARE IN USE AND ARE UNDER THE JURISDICTION OF THE COUNTY ROAD COMMISSION.

CHAIRMAN \_\_\_\_\_ DATE 1998



SCALE 0 400 1200 FEET  
One inch equals 600 feet

TOWNSHIP HARING  
SECTION 35 T. 22 N R. 9 W  
COUNTY WEXFORD



LEGEND

COUNTY LINE	-----
CORPORATE LIMITS	-----
STATE TRUNKLINE	=====
COUNTY PRIMARY	=====
COUNTY LOCAL	=====
ADJACENT COUNTY	=====
CITY OR VILLAGE STREET	=====

TOTAL FEET 6767' EQUALS 1.28 MILES

I HEREBY CERTIFY THAT THE ROADS SHOWN HEREON BY SYMBOL OR IN GREEN AS LOCAL ROADS ARE IN USE AND ARE UNDER THE JURISDICTION OF THE COUNTY ROAD COMMISSION.

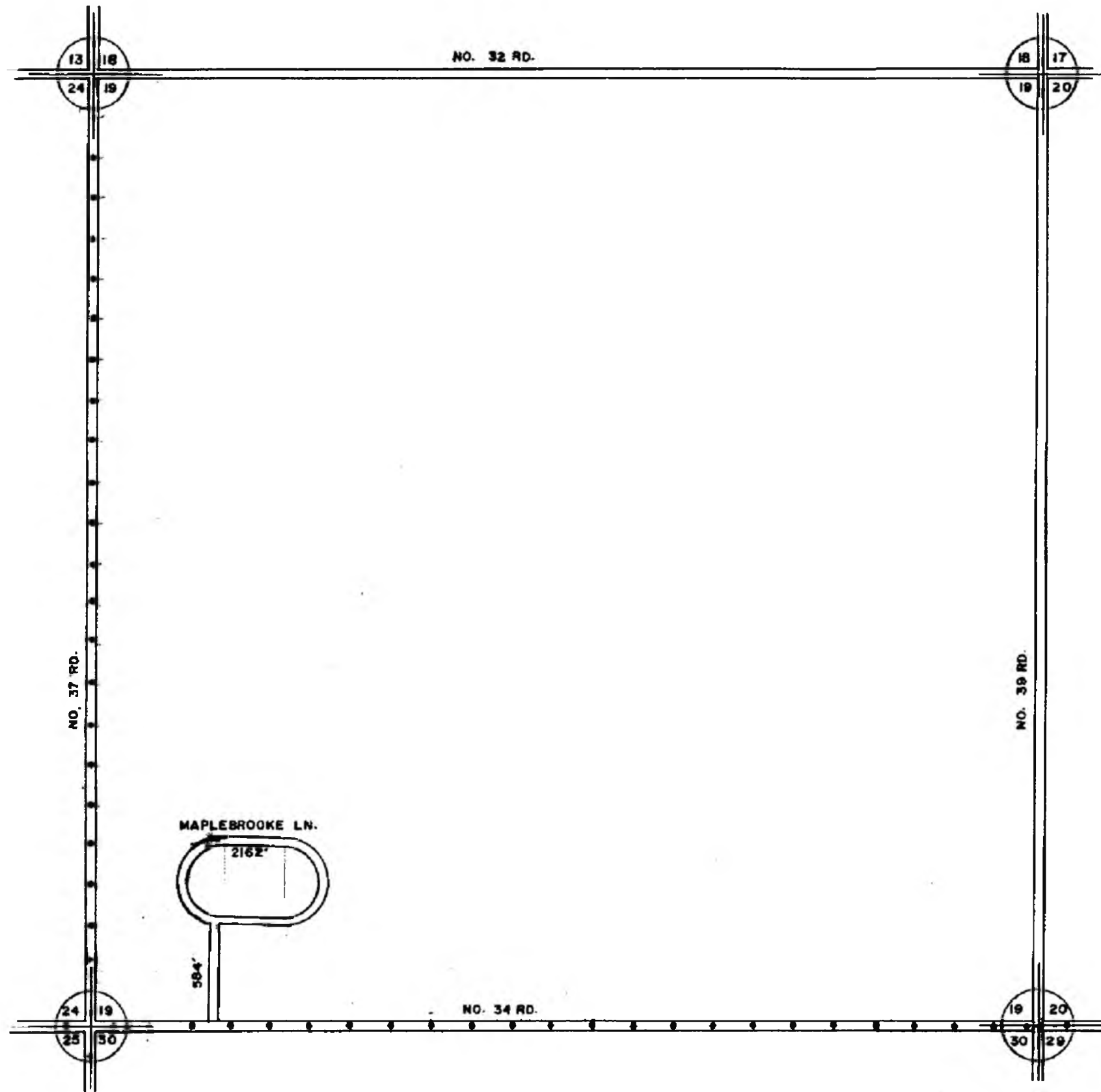
CHAIRMAN \_\_\_\_\_ DATE 1988

REV. 1988



SCALE 0 600 1200 FEET  
One inch equals 600 feet

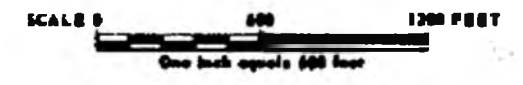
TOWNSHIP HARING  
SECTION 26 T. 22 N. R. 9 W  
COUNTY WEXFORD



**LEGEND**

COUNTY LINE	_____
CORPORATE LIMITS	_____
STATE TRUNKLINE	_____
COUNTY PRIMARY	_____
COUNTY LOCAL	_____
ADJACENT COUNTY	_____
CITY OR VILLAGE	_____
STREET	_____

**LOCAL ROAD SYSTEM**  
 TOTAL FEET 2746 EQUALS 0.52 MILES  
 MILEAGES SHALL BE TO THE NEAREST ONE HUNDREDTH OF A MILE.



I HEREBY CERTIFY THAT THE ROADS SHOWN HEREON BY SYMBOL OR IN GREEN AS LOCAL ROADS ARE IN USE AND ARE UNDER THE JURISDICTION OF THE COUNTY ROAD COMMISSION.

\_\_\_\_\_  
 CHAIRMAN                      DATE

REVISED BY \_\_\_\_\_

DATE 1998

TOWNSHIP HARING

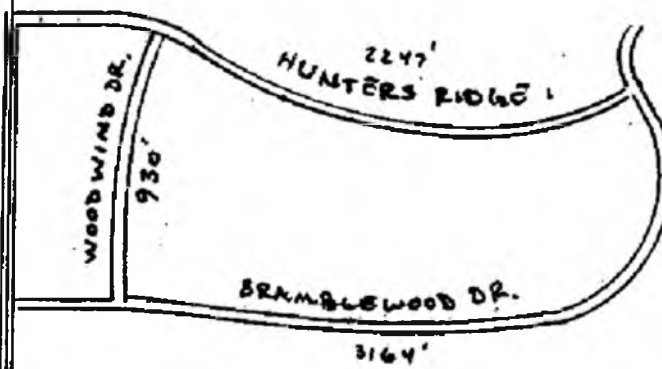
SECTION 18 T. 22N R. 9W

COUNTY WEXFORD

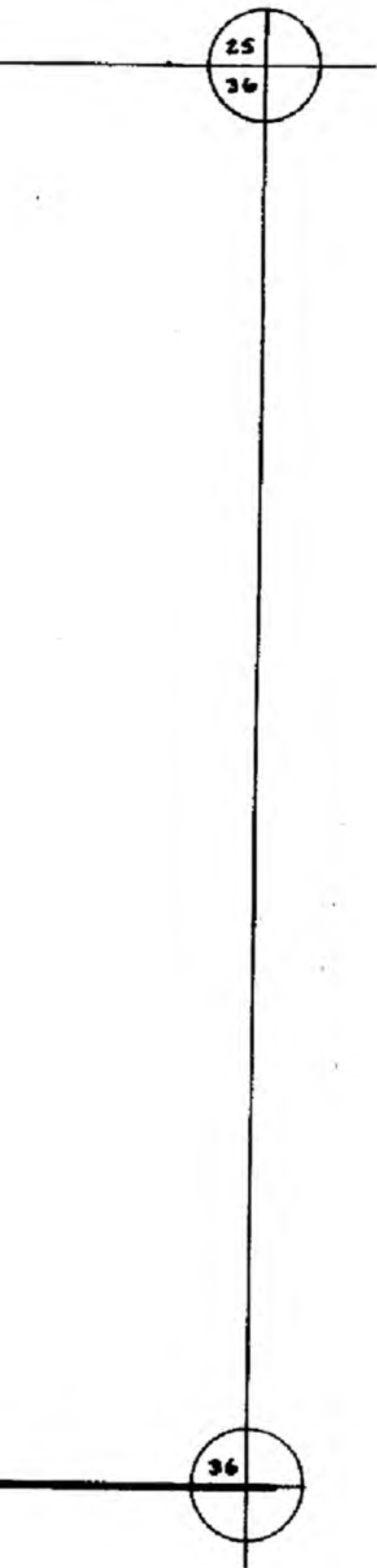
24 25  
35 36

No. 47 RD.

35 36



55



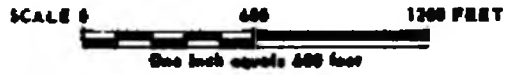
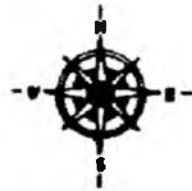
LEGEND

COUNTY LINE	-----
CORPORATE LIMITS	-----
STATE TRUNKLINE	=====
COUNTY PRIMARY	=====
COUNTY LOCAL	=====
ADJACENT COUNTY	=====
CITY OR VILLAGE	=====
STREET	=====

LOCAL ROAD SYSTEM

TOTAL FEET 6341 EQUALS 1.20 MILES

MILEAGES SHALL BE TO THE NEAREST ONE HUNDREDTH OF A MILE.



REVISED BY R. Lindbeck

DATE 1-6-05

TOWNSHIP HARRIS

SECTION 36 T. 22N R. 9W

COUNTY WEXFORD

SHEET NUMBER 8J

US 31 BR

20

29

12  
0

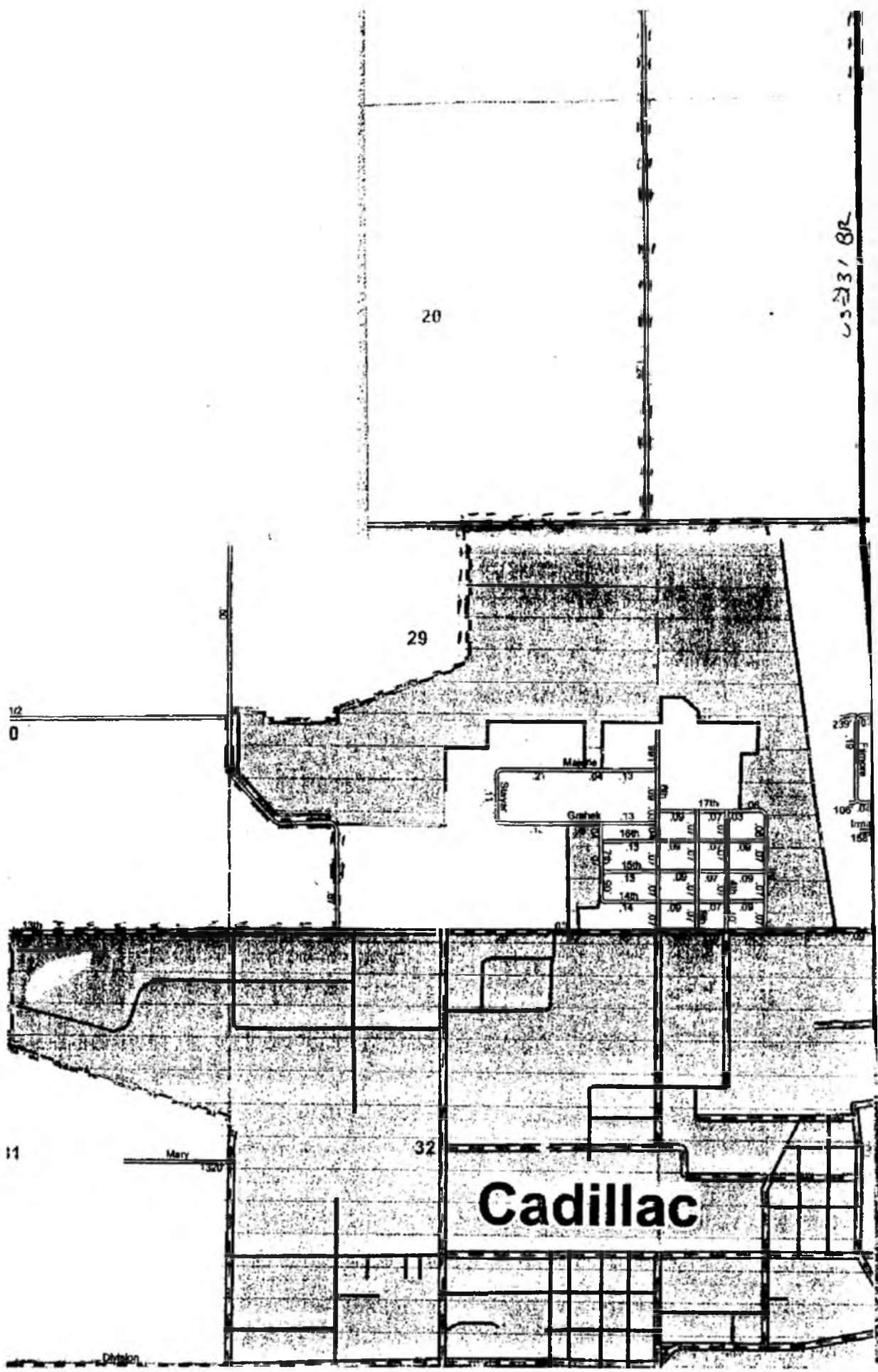
235  
106  
168

11

Mary









32

**Cadillac**



# URBAN AREA CERTIFICATION

## LEGEND

- COUNTY LINE 
- CORPORATE LIMITS 
- STATE TRUNKLINE 
- COUNTY PRIMARY 
- COUNTY LOCAL 
- ADJACENT COUNTY 
- CITY OR VILLAGE STREET 
- URBAN BOUNDARY 

PRIMARY ROAD SYSTEM IS 5.37 MILES

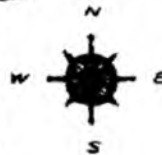
LOCAL ROAD SYSTEM IS 13.96 MILES

I HEREBY CERTIFY THAT THE ROADS SHOWN HEREON BY SYMBOL OR IN RED AS PRIMARY ROADS AND THOSE SHOWN HEREON BY SYMBOL OR IN GREEN AS LOCAL ROADS ARE IN USE AND ARE UNDER THE JURISDICTION OF THE COUNTY ROAD COMMISSION

CHAIRMAN

DATE

SCALE: 1 INCH = 1,200 FEET



HARING TOWNSHIP, T22N-R9W

SHEET NUMBER

8k

