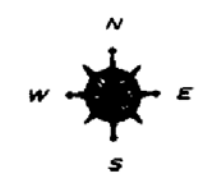


- LEGEND**
- COUNTY LINE
 - CORPORATE LIMITS
 - STATE TRUNKLINE
 - COUNTY PRIMARY
 - COUNTY LOCAL
 - AJACENT COUNTY
 - CITY OR VILLAGE STREET

PRIMARY ROAD SYSTEM IS 13.44 MILES
 LOCAL ROAD SYSTEM IS 49.22 MILES

I HEREBY CERTIFY THAT THE ROADS SHOWN HEREON BY SYMBOL OR IN RED AS PRIMARY ROADS AND THOSE SHOWN HEREON BY SYMBOL OR IN GREEN AS LOCAL ROADS ARE IN USE AND ARE UNDER THE JURISDICTION OF THE COUNTY ROAD COMMISSION.

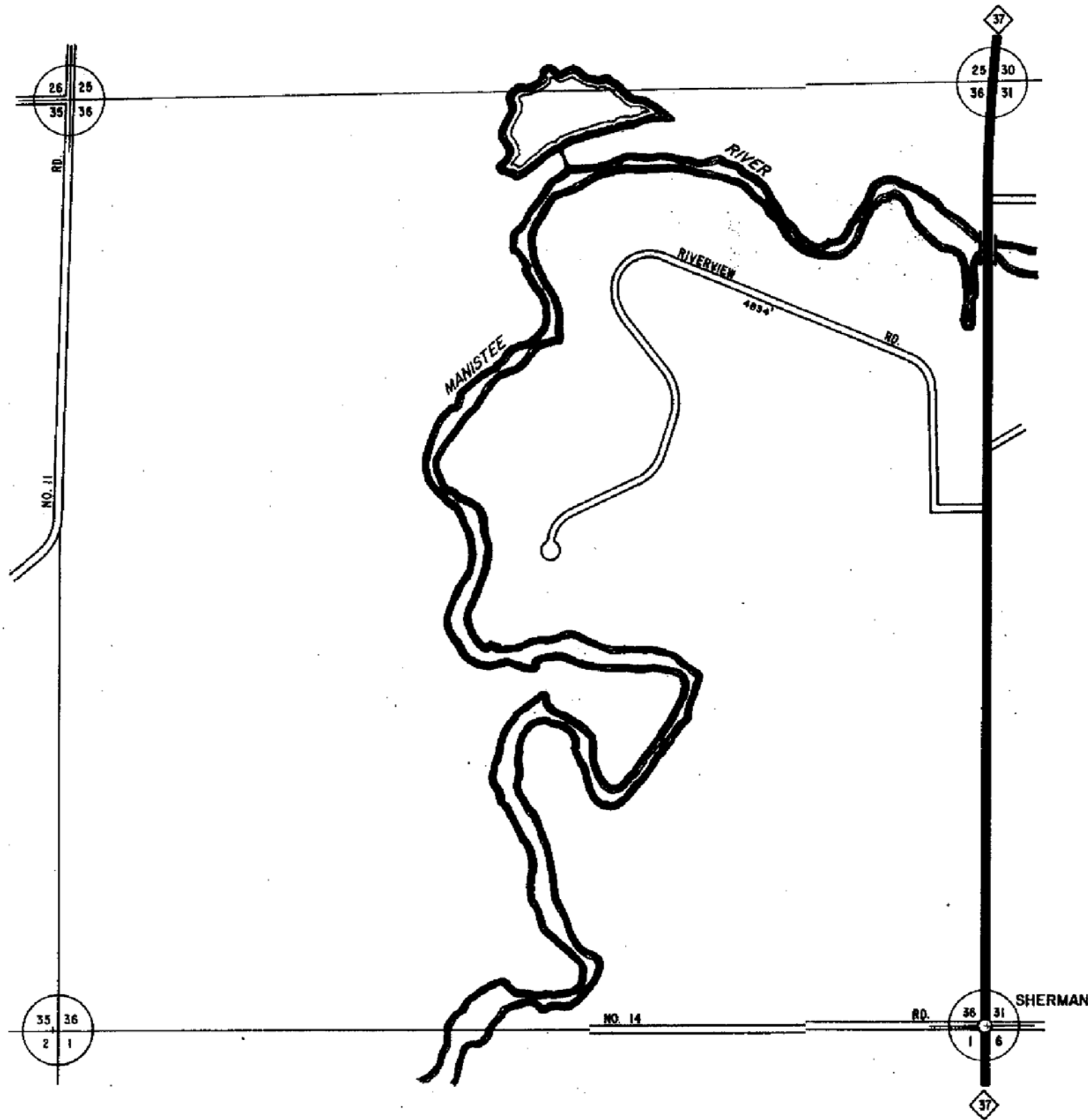
CHAIRMAN _____ DATE 1998
 REV. 2/2001



SCALE 0 1 MILE
 One Inch Equals 3000 Ft.

WEXFORD TWP.
 T 24 N - R 12 W
 WEXFORD COUNTY

13	14	15	16
9	10	11	12
5	6	7	8
1	2	3	4



LEGEND

COUNTY LINE	---
CORPORATE LIMITS	----
STATE TRUNKLINE	=====
COUNTY PRIMARY	-----
COUNTY LOCAL	-----
ADJACENT COUNTY	
CITY OR VILLAGE	-----
STREET	-----

TOTAL FEET 4834 EQUALS 0.92 MILES

I HEREBY CERTIFY THAT THE ROADS SHOWN HEREON BY SYMBOL OR IN GREEN AS LOCAL ROADS ARE IN USE AND ARE UNDER THE JURISDICTION OF THE COUNTY ROAD COMMISSION.

CHAIRMAN _____ DATE 1998



SCALE 0 600 1200 FEET
One inch equals 600 feet

TOWNSHIP WEXFORD
SECTION 36 T. 24 N R. 12 W
COUNTY WEXFORD