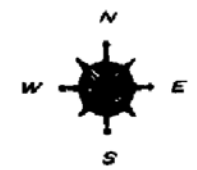


- LEGEND**
- COUNTY LINE
 - CORPORATE LIMITS
 - STATE TRUNKLINE
 - COUNTY PRIMARY
 - COUNTY LOCAL
 - ADJACENT COUNTY
 - CITY OR VILLAGE STREET

PRIMARY ROAD SYSTEM IS 16.40 MILES
 LOCAL ROAD SYSTEM IS 35.14 MILES

I HEREBY CERTIFY THAT THE ROADS SHOWN HEREON BY SYMBOL OR IN RED AS PRIMARY ROADS AND THOSE SHOWN HEREON BY SYMBOL OR IN GREEN AS LOCAL ROADS ARE IN USE AND ARE UNDER THE JURISDICTION OF THE COUNTY ROAD COMMISSION.

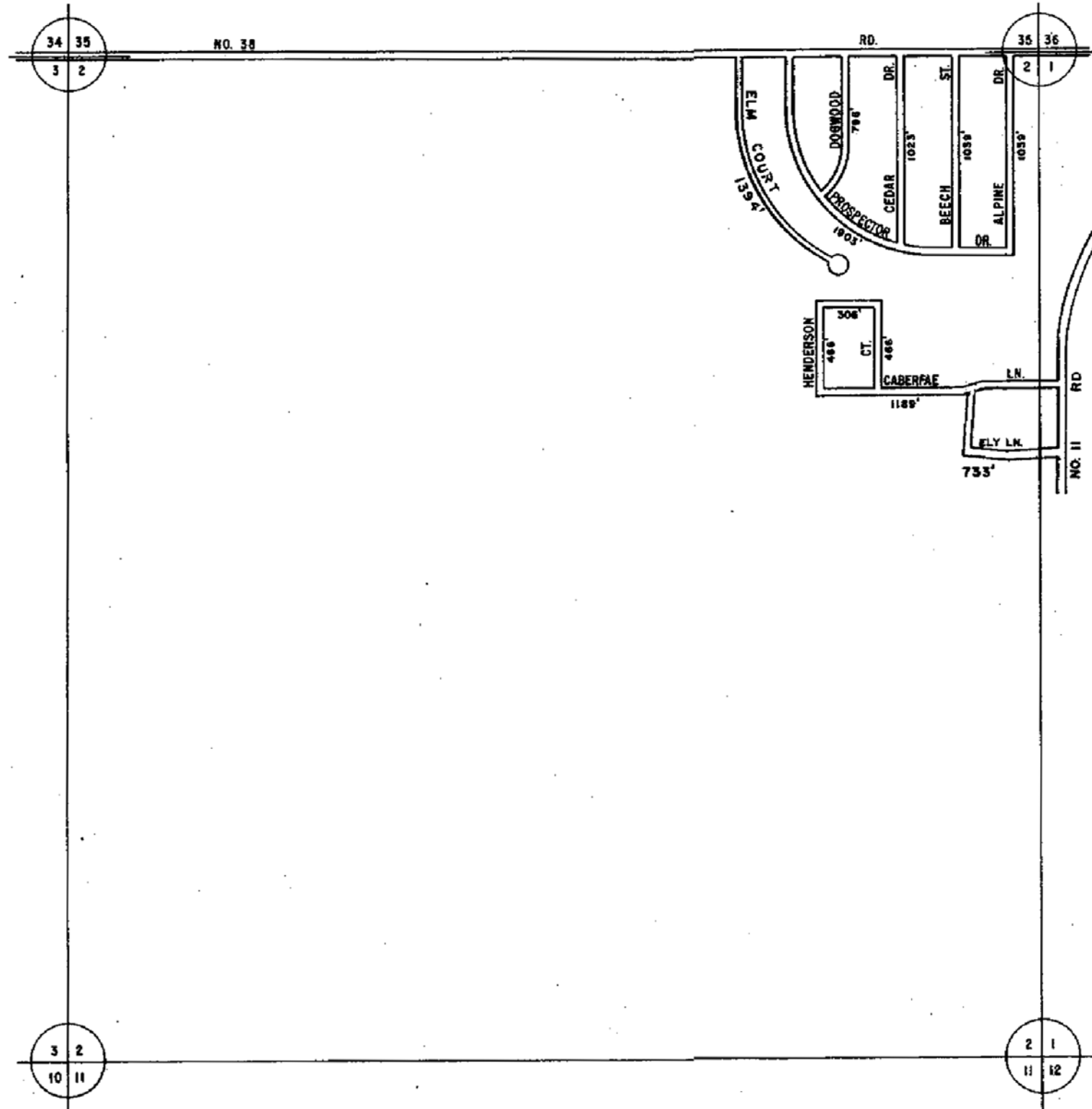
CHAIRMAN _____ DATE 1996
 Rev. (1980)
 " (1986)
 " (1987)
 " 1994
 " (1996)



SCALE 0 1 MILE
 One Inch Equals 3000 Ft.

SOUTH BRANCH TWP.
 T 21 N - R 12 W
 WEXFORD COUNTY

| | | | |
|----|----|----|----|
| 13 | 14 | 15 | 16 |
| 9 | 10 | 11 | 12 |
| 5 | 6 | 7 | 8 |
| 1 | 2 | 3 | 4 |



LEGEND

COUNTY LINE _____

CORPORATE LIMITS _____

STATE TRUNKLINE _____

COUNTY PRIMARY _____

COUNTY LOCAL _____

ADJACENT COUNTY _____

CITY OR VILLAGE _____

STREET _____

TOTAL FEET 10354 EQUALS 1.96 MILES

I HEREBY CERTIFY THAT THE ROADS SHOWN HEREON BY SYMBOL OR IN GREEN AS LOCAL ROADS ARE IN USE AND ARE UNDER THE JURISDICTION OF THE COUNTY ROAD COMMISSION.

CHAIRMAN _____ DATE 1990

Rev. 1991

REV. 1, 1995



SCALE 0 600 1200 FEET

One inch equals 600 feet

TOWNSHIP SOUTH BRANCH

SECTION 2 T. 21 N R. 12 W

COUNTY WEXFORD